

ANALYSIS OF THE NEW JERSEY BUDGET

**DEPARTMENT
OF EDUCATION**

FISCAL YEAR

2011 - 2012

NEW JERSEY STATE LEGISLATURE

SENATE BUDGET AND APPROPRIATIONS COMMITTEE

Paul A. Sarlo (D), 36th District (Parts of Bergen, Essex and Passaic), *Chair*
Brian P. Stack (D), 33rd District (Part of Hudson), *Vice-Chair*
James Beach (D), 6th District (Part of Camden)
Anthony R. Bucco (R), 25th District (Part of Morris)
Barbara Buono (D), 18th District (Part of Middlesex)
Sandra B. Cunningham (D), 31st District (Part of Hudson)
Michael J. Doherty (R), 23rd District (Warren and part of Hunterdon)
Linda R. Greenstein (D), 14th District (Parts of Mercer and Middlesex)
Steven Oroho (R), 24th District (Sussex and parts of Hunterdon and Morris)
Kevin J. O'Toole (R), 40th District (Parts of Bergen, Essex and Passaic)
Joseph Pennacchio (R), 26th District (Parts of Morris and Passaic)
M. Teresa Ruiz (D), 29th District (Parts of Essex and Union)
Jeff Van Drew (D), 1st District (Cape May and parts of Atlantic and Cumberland)

GENERAL ASSEMBLY BUDGET COMMITTEE

Louis D. Greenwald (D), 6th District (Part of Camden), *Chairman*
Gary S. Schaer (D), 36th District (Parts of Bergen, Essex and Passaic), *Vice Chairman*
Anthony M. Bucco (R), 25th District (Part of Morris)
John J. Burzichelli (D), 3rd District (Salem and parts of Cumberland and Gloucester)
Gary R. Chiusano (R), 24th District (Parts of Hunterdon, Morris and Sussex)
Albert Coutinho (D), 29th District (Parts of Essex and Union)
Gordon M. Johnson (D), 37th District (Part of Bergen)
Declan J. O'Scanlon, Jr. (R), 12th District (Parts of Mercer and Monmouth)
Nellie Pou (D), 35th District (Parts of Bergen and Passaic)
Joan M. Quigley (D), 32nd District (Parts of Bergen and Hudson)
Bonnie Watson Coleman (D), 15th District (Part of Mercer)
Jay Webber (R), 26th District (Parts of Morris and Passaic)

OFFICE OF LEGISLATIVE SERVICES

David J. Rosen, *Legislative Budget and Finance Officer*
Frank W. Haines III, *Assistant Legislative Budget and Finance Officer*

Marvin W. Jiggetts, *Director, Central Staff*
Kathleen Fazzari, *Section Chief, Education Section*

This report was prepared by the Education Section of the Office of Legislative Services under the direction of the Legislative Budget and Finance Officer. The primary author was Allen T. Dupree.

Questions or comments may be directed to the OLS Education Section (609-984-6843) or the Legislative Budget and Finance Office (609-292-8030).

DEPARTMENT OF EDUCATION

Budget Pages..... D-79 to D-102

Fiscal Summary (\$000)

	Expended FY 2010	Adjusted Appropriation FY 2011	Recommended FY 2012	Percent Change 2011-12
State Budgeted	\$9,533,487	\$10,690,619	\$10,269,187	(3.9%)
Federal Funds	2,153,591	1,110,290	846,964	(23.7%)
<u>Other</u>	<u>14,229</u>	<u>15,802</u>	<u>15,428</u>	<u>(2.4%)</u>
Grand Total	\$11,701,307	\$11,816,711	\$11,131,579	(5.8%)

Personnel Summary - Positions By Funding Source

	Actual FY 2010	Revised FY 2011	Funded FY 2012	Percent Change 2011-12
State	400	377	416	10.3%
Federal	189	169	210	24.3%
<u>Other</u>	<u>222</u>	<u>213</u>	<u>236</u>	<u>10.8%</u>
Total Positions	811	759	862	13.6%

FY 2010 (as of December) and revised FY 2011 (as of January) personnel data reflect actual payroll counts. FY 2012 data reflect the number of positions funded.

Link to Website: <http://www.njleg.state.nj.us/legislativepub/finance.asp>

Highlights

- Total direct K-12 State school aid to districts will increase by \$245.3 million in fiscal year 2011-2012 under the proposed budget, restoring approximately 20 percent of the aid reduction experienced by districts in the fiscal year 2010-2011 budget.
- Indirect aid to districts will decrease due to reductions in the State's contribution to the Teachers' Pension and Annuity Fund (\$311.6 million), debt service payments on Economic Development Authority school construction bonds (\$149.7 million), and post-retirement medical benefits (\$61.0 million).
- Total funding for preschool education aid remains unchanged in the proposed budget; however, the amount of aid provided to individual school districts may increase or decrease relative to the amount of aid received in the 2010-2011 school year.
- For the second consecutive year, debt service aid to school districts will be reduced by 15 percent, and districts that received school construction grants from the Schools Development Authority will be assessed an amount equal to 15 percent of the district's share of the State debt service payment due in fiscal year 2011-2012.
- The proposed budget for fiscal year 2011-2012 eliminates funding for New Jersey After 3.
- Funding for aid to nonpublic schools in the proposed budget totals \$79.5 million, representing the same level of funding provided in the current fiscal year.
- The proposed recommendation for direct State services (DSS) funding within the department is equal to the current fiscal year's appropriation of \$66.3 million.

Background Paper

- State School Aid Pursuant to the "School Funding Reform Act of 2008"pp. 23 - 57

Fiscal and Personnel Summary

AGENCY FUNDING BY SOURCE OF FUNDS (\$000)

	Expended FY 2010	Adj. Approp. FY 2011	Recom. FY 2012	Percent Change	
				20010-12	2011-12
General Fund					
Direct State Services	\$70,798	\$66,252	\$66,252	(6.4%)	0.0%
Grants-In-Aid	8,224	4,665	1,665	(79.8%)	(64.3%)
State Aid	580,526	923,532	306,559	(47.2%)	(66.8%)
Capital Construction	296	0	0	(100.0%)	0.0%
Debt Service	0	0	0	0.0%	0.0%
Sub-Total	\$659,844	\$994,449	\$374,476	(43.2%)	(62.3%)
Property Tax Relief Fund					
Direct State Services	\$0	\$0	\$0	0.0%	0.0%
Grants-In-Aid	0	0	0	0.0%	0.0%
State Aid	8,873,643	9,696,170	9,894,711	11.5%	2.0%
Sub-Total	\$8,873,643	\$9,696,170	\$9,894,711	11.5%	2.0%
Casino Revenue Fund	\$0	\$0	\$0	0.0%	0.0%
Casino Control Fund	\$0	\$0	\$0	0.0%	0.0%
State Total	\$9,533,487	\$10,690,619	\$10,269,187	7.7%	(3.9%)
Federal Funds	\$2,153,591	\$1,110,290	\$846,964	(60.7%)	(23.7%)
Other Funds	\$14,229	\$15,802	\$15,428	8.4%	(2.4%)
Grand Total	\$11,701,307	\$11,816,711	\$11,131,579	(4.9%)	(5.8%)

PERSONNEL SUMMARY - POSITIONS BY FUNDING SOURCE

	Actual FY 2010	Revised FY 2011	Funded FY 2012	Percent Change	
				2010-12	2011-12
State	400	377	416	4.0%	10.3%
Federal	189	169	210	11.1%	24.3%
All Other	222	213	236	6.3%	10.8%
Total Positions	811	759	862	6.3%	13.6%

FY 2010 (as of December) and revised FY 2011 (as of January) personnel data reflect actual payroll counts. FY 2012 data reflect the number of positions funded.

AFFIRMATIVE ACTION DATA

Total Minority Percent	27.9%	30.3%	27.6%	----	----
------------------------	-------	-------	-------	------	------

Significant Changes/New Programs (\$000)

<u>Budget Item</u>	<u>Adj. Approp. FY 2011</u>	<u>Recomm. FY 2012</u>	<u>Dollar Change</u>	<u>Percent Change</u>	<u>Budget Page</u>
Total State Appropriation, Department of Education	\$10,690,619	\$10,269,187	(\$421,432)	(3.9%)	D-79
State Aid					
Total State Aid	\$10,619,702	\$10,201,270	(\$418,432)	(3.9%)	D-79
<p>The recommended appropriation for State school aid for fiscal year 2011-2012 is \$10.201 billion, a decrease of \$418.4 million (or 3.9 percent) relative to the adjusted appropriation for the current year. A significant portion of this decrease assumes that the Legislature will approve a supplemental appropriation in the current year of \$311.6 to the department for the State's contribution to the Teachers' Pension and Annuity Fund. Other factors contributing to the overall projected decrease in the appropriation to the department include: 1) a reduction of \$149.7 million in the appropriation for the school construction and renovation fund, based on restructuring of debt on bonds issued by the Economic Development Authority to finance the school facilities program, 2) the elimination of a fiscal year 2010-2011 appropriation that was necessary to make the final State school aid payments for the 2009-2010 school year, and 3) an assumed savings of \$61.0 million for post-retirement medical benefits based on benefit changes to be proposed.</p>					
Direct K-12 Education Aid to School Districts	\$6,966,733	\$7,211,983	\$245,250	3.5%	
Equalization Aid	\$5,556,015	\$5,649,802	\$93,787	1.7%	D-85
Special Education Categorical Aid	\$620,883	\$667,015	\$46,132	7.4%	D-85
Extraordinary Special Education Aid	\$154,982	\$162,731	\$ 7,749	5.0%	D-86
Transportation Aid	\$93,115	\$107,092	\$13,977	15.0%	D-96
Security Aid	\$97,664	\$107,734	\$10,070	10.3%	D-85
Adjustment Aid	\$456,030	\$510,023	\$53,993	11.8%	D-85
School Choice Aid	\$9,847	\$22,268	\$12,421	126.1%	D-85

Significant Changes/New Programs (\$000) (Cont'd)

<u>Budget Item</u>	<u>Adj. Approp.</u> <u>FY 2011</u>	<u>Recomm.</u> <u>FY 2012</u>	<u>Dollar</u> <u>Change</u>	<u>Percent</u> <u>Change</u>	<u>Budget</u> <u>Page</u>
Assessment of EDA Debt Service	-\$21,803	-\$14,682	\$ 7,121	(32.7%)	D-85

K-12 school aid that is paid directly to school districts totals \$7.212 billion in the proposed fiscal year 2011-2012 budget, an increase of \$245.3 million, or 3.5 percent over the fiscal year 2010-2011 adjusted appropriation. In the case of certain aid categories (equalization aid, educational adequacy aid, adjustment aid, transportation aid, special education categorical aid, and security categorical aid), districts are initially allotted an amount equal to their aid levels for the 2010-2011 school year. State aid is then increased by an amount equal to one percent of the districts' total general fund budgets for the 2009-2010 school year. In most districts, the fiscal year 2011-2012 aid increase is approximately 20 percent of the aid reduction experienced in the 2010-2011 school year.

The significant growth in school choice aid (\$12.4 million, or 126.1 percent) reflects the expected increase in the number of districts that will participate in the interdistrict public school choice program after the enactment of P.L.2010, c.65. Of the total recommended appropriation for school choice aid, \$10.7 million has been allocated to the 15 existing participant districts. The balance will be allocated to new school choice districts based on projected enrollment approved by the Commissioner of Education. It should be noted that, pursuant to language included in the proposed budget (page D-87), any school choice aid awarded to a new choice district would be offset by a corresponding decrease in the amount of adjustment aid awarded to a district.

Growth Impact – Payment Changes	\$109,000	-\$21,600	(\$130,600)	—	D-85
------------------------------------	-----------	-----------	-------------	---	------

Since fiscal year 2002-2003, the final State school aid payment has been delayed until the subsequent fiscal year (since fiscal year 2009-2010, the last two State school aid payments have been delayed). In the case when total State school aid increases from one year to the next, this payment shift creates a savings in the fiscal year in which the delayed payments are actually made. Since there was a significant reduction in State school aid in the 2010-2011 school year, the opposite was true and an additional appropriation of \$109.0 million was required to make the final two school aid payments of the 2009-2010 school year. To the extent that State aid will increase in fiscal year 2011-2012, the State will again realize a savings, which, when combined with the \$109.0 million appropriation that is no longer necessary, reflects a net savings of \$130.6 million.

Charter School Aid	\$8,500	\$13,100	\$ 4,600	54.1%	D-85
--------------------	---------	----------	----------	-------	------

The recommended appropriation for charter school aid, \$13.1 million, represents an increase of \$4.6 million (54.1 percent) over the current appropriation. Based on language included in the proposed budget (page D-87), the aid will be used to ensure that all charter schools will receive at least as much total revenue from State and local sources in the 2011-2012 school year as was received in the 2007-2008 school year; charter schools will also be held harmless in terms of per pupil revenue received in that school year. This appropriation will also be used to pay the costs of a student enrolling in a charter school for the first time

Significant Changes/New Programs (\$000) (Cont'd)

<u>Budget Item</u>	<u>Adj. Approp. FY 2011</u>	<u>Recomm. FY 2012</u>	<u>Dollar Change</u>	<u>Percent Change</u>	<u>Budget Page</u>
--------------------	---------------------------------	----------------------------	--------------------------	---------------------------	------------------------

without having been previously enrolled in the district of residence; this payment is required pursuant to section 12 of P.L.1995, c.426.

Total School Facilities Aid	\$684,621	\$532,860	(\$151,761)	(22.2%)	D-96
School Construction and Renovation Fund	\$547,233	\$397,558	(\$149,675)	(27.4%)	D-96

The proposed fiscal year 2011-2012 budget appropriates \$532.9 million for total school facilities aid, a reduction of \$151.8 million (22.2 percent). The reduction is almost completely due to the decreased appropriation to the school construction and renovation fund. This fund is used to support the State's debt service payments on bonds issued by the Economic Development Authority to finance the State's school facilities program. The decreased appropriation is due to the restructuring of outstanding debt.

Total Pensions and Benefits on Behalf of School Districts	\$2,091,616	\$1,704,124	(\$387,492)	(18.5%)	D-96
Teachers' Pension and Annuity Fund	\$311,606	\$0	(\$311,606)	(100.0%)	D-96
Post-Retirement Medical Benefits	\$823,090	\$762,068	(\$61,022)	(7.4%)	D-96 to D-97

The recommended appropriation for pension and benefit payments on behalf of school districts, \$1.704 billion, is a reduction of \$387.5 million (18.5 percent) relative to the adjusted appropriation for fiscal year 2010-2011. It should be noted that most of the reduction would be contingent on legislative actions. First, the adjusted appropriation assumes that a supplemental appropriation of \$311.6 million will be made in the current fiscal year to make a contribution to the Teachers' Pension and Annuity Fund. Based on information presented during the Governor's budget address, this would represent an early payment that would otherwise be paid in fiscal year 2011-2012. Second, the total appropriation for post-retirement medical benefits, \$762.1 million, is a reduction of \$61.0 million (7.4 percent) from fiscal year 2010-2011. The projected decrease assumes statutory changes are made to post-retirement medical benefits, including requiring retirees to pay a certain percentage of the premium of their health benefits package and offering more coverage options.

Grants-In-Aid

Total Grants-In-Aid	\$4,665	\$1,665	(\$3,000)	(64.3%)	D-80
New Jersey After 3	\$3,000	\$0	(\$3,000)	(100.0%)	D-96

Significant Changes/New Programs (\$000) (Cont'd)

<u>Budget Item</u>	<u>Adj. Approp.</u> <u>FY 2011</u>	<u>Recomm.</u> <u>FY 2012</u>	<u>Dollar</u> <u>Change</u>	<u>Percent</u> <u>Change</u>	<u>Budget</u> <u>Page</u>
--------------------	---------------------------------------	----------------------------------	--------------------------------	---------------------------------	------------------------------

Grants-in-Aid, totaling \$1.7 million in fiscal year 2011-2012, is \$3 million, or 64.3 percent less than fiscal year 2010-2011. The decrease reflects the elimination of State support for New Jersey After 3. In prior years, the State appropriation provided funding to New Jersey After 3, Inc., which in turn raised additional funds and provided grants to organizations to operate after-school programs.

Significant Language Changes

Ownership of Equipment Purchased with Nonpublic Technology Initiative Funds

Deletion

2011 Handbook: p. B-44
2012 Budget: p.

~~Items purchased for the use of nonpublic school students with Nonpublic Technology Initiative funds in previous budget cycles shall remain the property of the local education agency; provided however, that they shall remain on permanent loan for the use of nonpublic school students for the balance of the technologies' useful life.~~

Explanation

The 2009-2010 Appropriations Act eliminated funding for the nonpublic technology initiative, but included language clarifying that any equipment previously purchased with this funding would remain the property of the local school district. However, the equipment would remain available for use by nonpublic school students for the remainder of the items' useful life. The proposed fiscal year 2011-2012 budget would delete this language.

Charging of Extraordinary Special Education Costs Aid

Revision

2011 Handbook: p. B-44
2012 Budget: p. D-87

The amount hereinabove appropriated for Extraordinary Special Education Costs Aid shall be charged first to receipts of the supplemental fee established pursuant to section 2 of P.L.2003, c.113 (C.46:15--7.1) credited to the Extraordinary Aid Account. Notwithstanding the provisions of that law to the contrary, the amount appropriated for Extraordinary Special Education Costs Aid from receipts deposited in the Extraordinary Aid Account shall not exceed the amount hereinabove appropriated. Notwithstanding the provisions of any law or regulation to the contrary, of the amount hereinabove appropriated for Extraordinary Special Education Costs Aid, such sums as the Director of the Division of Budget and Accounting may determine shall be charged first to the Property Tax Relief Fund instead of receipts deposited in the Extraordinary Aid Account.

Explanation

Section 2 of P.L.2003, c.113 requires that a grantor pay a supplemental fee to a county clerk and register of deeds and mortgages based on the value of the property being transferred. A portion of the fee is retained by the county, while the balance is transferred to the State Treasurer for deposit into the Extraordinary Aid Account for purposes of providing extraordinary aid to municipalities and

EXPLANATION: FY 2011 language not recommended for FY 2012 denoted by strikethrough.
Recommended FY 2012 language that did not appear in FY 2011 denoted by underlining.

Significant Language Changes (Cont'd)

extraordinary special education costs aid to school districts. The proposed fiscal year 2011-2012 budget includes language providing that the appropriation for extraordinary special education costs aid would first be charged to the Property Tax Relief Fund, rather than proceeds in the Extraordinary Aid Account. It should be noted that language included in the proposed budget (page D-55) stipulates that funds in this account will not be used to provide aid to municipalities.

Extraordinary Special Education Costs Aid Calculation

Deletion

2011 Handbook: p. B-44
2012 Budget: p.

~~Notwithstanding the provisions of any law or regulation to the contrary, a district's allocation of the amount hereinabove appropriated for Extraordinary Special Education Costs Aid shall be 85% of the amount calculated in accordance with section 13 of P.L.2007, c.260 (C.18A:7F-55).~~

Explanation

The fiscal year 2010-2011 Appropriations Act reduced school districts' allocation of extraordinary special education costs aid by 15 percent of the amount that would have been awarded pursuant to the "School Funding Reform Act of 2008" (SFRA). The proposed fiscal year 2011-2012 budget deletes the corresponding language and provides aid in an amount consistent with the SFRA.

State Aid Growth Limit

Deletion

2011 Handbook: p. B-44
2012 Budget: p.

~~Notwithstanding the provisions of subsection d. of section 5 of P.L.2007, c.260 (C.18A:7F-47) or any other law or regulation to the contrary, the calculation of a district's allocation of the amounts hereinabove appropriated for Equalization Aid, Special Education Categorical Aid, and Security Aid shall use a State aid growth limit of 0% in the case of a district spending above adequacy and a district spending below adequacy.~~

Explanation

The fiscal year 2010-2011 Appropriations Act stipulated that a school district's initial State school aid calculation for certain aid categories would be no greater

EXPLANATION: FY 2011 language not recommended for FY 2012 denoted by strikethrough.
Recommended FY 2012 language that did not appear in FY 2011 denoted by underlining.

Significant Language Changes (Cont'd)

than the amount awarded in the previous school year. The proposed fiscal year 2011-2012 budget eliminates that language, as a separate language provision (included on page D-101) establishes the manner in which aid to school districts will be determined, making this language provision obsolete.

Adequacy Spending Calculation

Deletion

2011 Handbook: p. B-44
2012 Budget: p.

~~Notwithstanding the provisions of section 5 of P.L.2007, c.260 (C.18A:7F-47) to the contrary, the prebudget year spending categories used for the purposes of determining whether a school district or county vocational school district is spending above or below adequacy; its applicable State aid growth limit in the determination of district spending; and prebudget year total stabilized aid used in the calculation of 2010-2011 district allocations of the amounts hereinabove appropriated for Equalization Aid, Special Education Categorical Aid, and Security Aid, shall also include Adjustment Aid.~~

Explanation

The appropriations acts in prior years have included language specifying that the amount of adjustment aid received by a school district will be included when determining the district's spending relative to the adequacy budget calculated by the department. Under the "School Funding Reform Act of 2008," a district's spending relative to adequacy determines the amount by which a district's aid can increase annually. Since a separate language provisions in the proposed fiscal year 2011-2012 budget allocates State school aid in a manner that does not consider spending relative to adequacy, the above language provision is not necessary.

Educational Adequacy Aid

Deletion

2011 Handbook: p. B-44
2012 Budget: p.

~~Notwithstanding the provisions of subsection b. of section 16 of P.L.2007, c.260 (C.18A:7F-58) or any other law or regulation to the contrary, an eligible district's allocation of the amount hereinabove appropriated for Educational Adequacy Aid shall equal the district's 2009-2010 allocation of Educational Adequacy Aid.~~

Explanation

EXPLANATION: FY 2011 language not recommended for FY 2012 denoted by strikethrough.
Recommended FY 2012 language that did not appear in FY 2011 denoted by underlining.

Significant Language Changes (Cont'd)

The "School Funding Reform Act of 2008" (SFRA) provides educational adequacy aid to former Abbott districts that are spending below adequacy and either: 1) failed to make adequate yearly progress, as defined by federal law, or 2) have property tax rates significantly higher than the State average. Under SFRA, the amount of aid would increase from fiscal years 2008-2009 through 2010-2011, and would then remain level in future years. The combination of this aid and required property tax levy increases would raise the districts' spending to their respective adequacy levels.

The fiscal year 2010-2011 Appropriations Act stipulated that the districts would receive educational adequacy aid in an amount equal to what was received in fiscal year 2009-2010. The proposed fiscal year 2011-2012 budget deletes this language, but includes a separate language provision that has the effect of continuing to provide these districts with educational adequacy aid at the fiscal year 2009-2010 level.

Preschool Education Aid

Revision

2011 Handbook: p. B-45
2012 Budget: p. D-87

Notwithstanding the provisions of any law or regulation to the contrary, amounts hereinabove appropriated for Preschool Education Aid shall be used for such sums as are necessary: 1) in the case of a district that received Early Launch to Learning Initiative aid in the 2007--2008 school year, an amount equal to the district's 2007--2008 allocation of Early Launch to Learning Initiative aid; 2) in the case of a school district that received a 2008--2009 allocation of Preschool Education Aid based on its 2007--2008 Early Childhood Program Aid allocation, ~~to provide the greater of the district's prebudget year award or the district's~~ an aid amount equal to the per pupil allocation of Preschool Education Aid ~~, inflated by the CPI, and~~ used to determine the district's 2009-2010 aid allocation multiplied by the district's projected preschool enrollment; and 3) in the case of a any other district with an allocation of Preschool Education Aid in the ~~2008--2009~~ 2010-2011 school year calculated using the provisions of ~~subsection a. of~~ section 12 of P.L.2007, c.260 (C.18A:7F--54), an amount calculated in accordance with those provisions based upon ~~2010--2011~~ 2011-2012 projected enrollments, ~~subject to the final determination of the Commissioner of Education based on plan review;~~ and 4) ~~in the case of a district that received Preschool Expansion Aid or Education Opportunity Aid in the 2007--2008 school year, an amount calculated in accordance with the provisions of section 12 of P.L.2007, c.260 (C.18A:7F--54) based on projected 2010--2011 enrollments, subject to the final determination of the commissioner based on plan review~~ , where the CPI equals zero .

EXPLANATION: FY 2011 language not recommended for FY 2012 denoted by strikethrough.
Recommended FY 2012 language that did not appear in FY 2011 denoted by underlining.

Significant Language Changes (Cont'd)

Explanation

Consistent with the appropriations acts from the prior two fiscal years, the proposed fiscal year 2011-2012 budget does not include an appropriation for preschool education aid sufficient to fund the expansion of preschool education included in the "School Funding Reform Act of 2008" (SFRA). The proposed language changes yield calculations that differ across various groups of districts. As such, each is discussed separately.

- The fiscal year 2010-2011 Appropriations Act provided preschool education aid to former Abbott districts based on the provisions of the SFRA. The SFRA, in turn, stipulates that the district will receive aid in an amount equal to the greater of: 1) the per pupil amounts included in the SFRA multiplied by the district's projected enrollment in each educational setting (in-district, private provider, or Head Start), 2) the total amount of preschool education aid received by the district in the 2008-2009 school year (which equaled the approved preschool budget for the 2007-2008 school year), or 3) the 2008-2009 preschool education aid per pupil amount multiplied by the projected enrollment. The proposed fiscal year 2011-2012 budget would provide aid in the same manner, except that it omits the adjustment for the CPI. As such, districts will receive aid based on the fiscal year 2009-2010 preschool education aid per pupil amounts. A school district may receive less preschool education aid due to an enrollment decline.*
- Four school districts received approval to begin to expand their preschool programs during the 2008-2009 school year. The fiscal year 2010-2011 Appropriations Act provided preschool education aid pursuant to the provisions of SFRA, except that the CPI was set to zero for the fiscal year. The proposed fiscal year 2011-2012 budget includes similar language. As was the case in the 2010-2011 school year, a school district may see a decrease in preschool education aid if there is an enrollment decline.*
- For districts, other than former Abbott districts, that received early childhood program aid, the fiscal year 2010-2011 budget provided the districts with the greater of: 1) the amount of preschool education aid received in fiscal year 2009-2010, or 2) the fiscal year 2009-2010 preschool education aid per pupil amount multiplied by the projected preschool enrollment (pursuant to language included in the budget, the CPI for fiscal year 2010-2011 was zero). The proposed fiscal year 2011-2012 budget would provide aid to these districts based on the fiscal year 2009-2010 preschool aid per pupil amount multiplied by the projected enrollment, but eliminates the hold harmless provision. Under this language change, a district may experience a decrease in its preschool*

EXPLANATION: FY 2011 language not recommended for FY 2012 denoted by strikethrough.
Recommended FY 2012 language that did not appear in FY 2011 denoted by underlining.

Significant Language Changes (Cont'd)

education aid due to an enrollment decrease or the lack of the hold harmless provision.

- *Districts that received an Early Launch to Literacy Initiative (ELLI) grant in the 2007-2008 school year received preschool education aid in an equal amount under the fiscal year 2010-2011 Appropriations Act. The proposed 2011-2012 budget would continue to provide funding at that level.*

School Choice Aid

Revision

2011 Handbook: p. B-45
2012 Budget: p. D-87

Notwithstanding the provisions of section 20 of P.L.2007, c.260 (C.18A:7F--62) to the contrary, a district allocation of the amount hereinabove appropriated for School Choice Aid shall be determined ~~based on stabilized Equalization Aid~~ by multiplying the number of choice students as of October 15, 2010 by the district's 2010--2011 adequacy budget local levy per pupil amount, defined as the net of the district's 2010--2011 adequacy budget less the district's 2010--2011 stabilized equalization aid divided by the district's projected October 2010 resident enrollment. In the case of a choice school not in operation for the 2010--2011 school year ("expansion district"), the 2010--2011 adequacy budget local levy per pupil amount shall be multiplied by the district's anticipated choice student enrollment, approved by the Commissioner of Education. An "expansion district's" initial allocation of Adjustment Aid for the 2011--2012 school year will be reduced by amounts awarded as School Choice Aid. A district's allocation shall be adjusted upon receipt of resident enrollment as of October 14, 2011 as reflected on the Application for State School Aid for 2011--2012. In determining a district's allocation of School Choice Aid, the per pupil amount for any preschool choice student shall be set at zero.

Explanation

The proposed fiscal year 2011-2012 budget would provide State school aid in a manner that makes the calculation of a school district's adequacy budget for the 2011-2012 school year unnecessary. Given that the department has not performed this calculation, the above language specifies that school choice aid will be provided to districts participating in the interdistrict public school choice program based on relevant calculations from the 2010-2011 school year. The language also specifies that, for a district participating in the choice program for the first time in the 2011-2012 school year, the district's allocation of adjustment aid will be reduced by the amount of school choice aid received. The language specifies that a district's allocation of school choice aid will be adjusted based on the actual number of choice students enrolled as of October 14, 2011 (although,

EXPLANATION: FY 2011 language not recommended for FY 2012 denoted by strikethrough.
Recommended FY 2012 language that did not appear in FY 2011 denoted by underlining.

Significant Language Changes (Cont'd)

the language should state, "...as reflected on the Application for State School Aid for 2012-2013"). Finally, the language stipulates that school choice aid will not be provided for preschool students.

Charter School Aid

Revision

2011 Handbook: p. B-45
2012 Budget: p. D-87

Notwithstanding the provisions of any law or regulation to the contrary, amounts hereinabove appropriated for Charter School Aid shall be used for such sums as are necessary: 1) to provide that in the ~~2010-2011~~ 2011-2012 school year, a charter school receives no less total support from the State and the resident district than the sum of the total 2007--2008 payments from the resident district and the 2007--2008 payments of Charter School Aid and Charter Schools -- Council on Local Mandates Aid and to ensure that such total payments provide a 2011-2012 per pupil amount that is no less than the 2007-2008 per pupil amount based on average daily enrollment; and 2) to provide amounts pursuant to section 12 of P.L.1995, c.426 (C.18A:36A--12).

Explanation

The fiscal year 2010-2011 Appropriations Act included language providing that the State would allocate revenue to charter schools to ensure that they receive no less total revenue from State and local sources than the amount received in the 2007-2008 school year. Language included in the proposed fiscal year 2011-2012 budget would also ensure that a charter school does not receive less revenue on a per pupil basis than the amount received in the 2007-2008 school year.

State Board of Examiners' Receipts

Revision

2011 Handbook: p. B-49
2012 Budget: p. D-97

Receipts from the State Board of Examiners' fees in excess of those anticipated , not to exceed \$1,200,000, and the unexpended program balances at the end of the preceding fiscal year, are appropriated for the operation of the Professional Development and Licensure programs.

Explanation

EXPLANATION: FY 2011 language not recommended for FY 2012 denoted by strikethrough.
Recommended FY 2012 language that did not appear in FY 2011 denoted by underlining.

Significant Language Changes (Cont'd)

The State Board of Examiners receives fees from individuals seeking the certification necessary to be employed in instructional, support, and administrative positions in New Jersey school districts. Under language included in the appropriations acts in recent years, any revenue received in excess of the initial projection was dedicated to the operation of the department's professional development and licensure program. The language included in the proposed fiscal year 2011-2012 budget would dedicate only the first \$1.2 million in excess receipts for this purpose. The following table shows the difference between anticipated and actual receipts for the past several fiscal years.

State Board of Examiners Receipts: FY 2007 to FY 2012

	Anticipated Receipts	Actual Receipts
FY 2007	\$5.000 million	\$5.554 million
FY 2008	\$4.800 million	\$5.792 million
FY 2009	\$4.800 million	\$7.467 million
FY 2010	\$5.125 million	\$7.658 million
FY 2011	\$5.764 million	\$5.934 million (est.)
FY 2012	\$4.500 million	N/A

FY 2011 actual receipts and FY 2012 anticipated receipts are from Schedule 1 State Revenues table included in the fiscal year 2011-2012 proposed budget. All other figures are from the State accounting system.

Liberty Science Center

Deletion

2011 Handbook: p. B-49
2012 Budget: p.

~~In addition to the amounts hereinabove appropriated for the Liberty Science Center Educational Services, there are appropriated such additional sums as may be necessary for support of such educational services and the operations of the center, subject to the approval of the Director of the Division of Budget and Accounting.~~

Explanation

Previous appropriations acts provided funding to the Liberty Science Center for the provision of educational services to students in districts with high concentrations of at-risk students. Language included in the fiscal year 2010-2011 Appropriations Act authorized supplemental appropriations to support the provision of these services and the center's operational expenses. During the year, supplemental appropriations to the center totaled \$3.9 million (shown on page D-413 of the recommended budget under Interdepartmental Accounts).

EXPLANATION: FY 2011 language not recommended for FY 2012 denoted by strikethrough. Recommended FY 2012 language that did not appear in FY 2011 denoted by underlining.

Significant Language Changes (Cont'd)

In lieu of the above language, the recommended fiscal year 2011-2012 budget includes an appropriation of \$11.073 million (page D-413) and language (page D-417) that stipulates that the appropriation is to be used for debt service obligations and operational support. The language also provides the Director of the Division of Budget and Accounting with the authority to make supplemental appropriations for operational support.

New Jersey After 3

Deletion

2011 Handbook: p. B-49
2012 Budget: p.

~~The sums provided hereinabove for New Jersey After 3 shall be conditioned upon the State Treasurer and the grant recipient entering into a grant agreement; shall be available for grants awarded by New Jersey After 3, Inc.; and shall be available for funding programs, activities, functions, and facilities consistent with recommendations and proposals of the New Jersey After 3 Advisory Committee.~~

Explanation

In recent years, the appropriations acts have included funding for New Jersey After 3 and language specifying how the funding would be used. The funding went to New Jersey After 3, Inc., which in turn raised additional revenue and provided grants to operators of after-school programs. The recommended fiscal year 2011-2012 budget eliminates funding for NJ After 3, making the corresponding language unnecessary.

State Aid Growth Limit

Deletion

2011 Handbook: p. B-50
2012 Budget: p.

~~Notwithstanding the provisions of subsection d. of section 5 of P.L.2007, c.260 (C.18A:7F-47) or any other law or regulation to the contrary, the calculation of a district's allocation of the amount hereinabove appropriated for Transportation Aid shall use a State aid growth limit of 0% in the case of a district spending above adequacy and a district spending below adequacy.~~

Explanation

EXPLANATION: FY 2011 language not recommended for FY 2012 denoted by strikethrough.
Recommended FY 2012 language that did not appear in FY 2011 denoted by underlining.

Significant Language Changes (Cont'd)

The fiscal year 2010-2011 Appropriations Act stipulated that a school district's initial State school aid calculation for certain categories of aid would be no greater than the amount awarded in the previous school year. The proposed fiscal year 2011-2012 budget eliminates this language, as a separate language provision (included on page D-101 of the budget) establishes the manner in which aid to school districts will be determined, making this language provision obsolete.

Adequacy Spending Calculation

Deletion

2011 Handbook: p. B-50
2012 Budget: p.

~~Notwithstanding the provisions of section 5 of P.L.2007, c.260 (C.18A:7F-47) to the contrary, the prebudget year spending categories used for the purposes of determining: whether a school district or county vocational school district is spending above or below adequacy; its applicable State aid growth limit in the determination of district spending; and prebudget year total stabilized aid used in the calculation of 2010-2011 district allocations of the amount hereinabove appropriated for TransportationAid, shall also include Adjustment Aid.~~

Explanation

The appropriations acts in prior years have included language specifying that the amount of adjustment aid received by a school district will be included when determining the district's spending relative to the adequacy budget calculated by the department. Under the "School Funding Reform Act of 2008," a district's spending relative to adequacy determines the amount by which a district's aid can increase annually. Since a separate language provisions in the proposed fiscal year 2011-2012 budget allocates State school aid in a manner that does not consider spending relative to adequacy, the above language provision is not necessary.

Salary Freeze Incentive

Deletion

2011 Handbook: p. B-51
2012 Budget: p.

~~Notwithstanding the provisions of any law or regulation to the contrary, of the amount hereinabove appropriated for Social Security Tax there is appropriated to each school district, subject to the approval of the Director of the Division of Budget and Accounting, a grant in a sum equivalent to the amount of the reduction in Social SecurityTax as a result~~

EXPLANATION: FY 2011 language not recommended for FY 2012 denoted by strikethrough.
Recommended FY 2012 language that did not appear in FY 2011 denoted by underlining.

Significant Language Changes (Cont'd)

~~of such school district achieving a voluntary wage freeze that results in savings in Social Security Tax contributions during the current fiscal year for such school district, such grant subject to approval by the Commissioner of Education of an application by the school district to the commissioner containing documentation of the savings achieved by the school district. Provided however, that if the school district requesting a grant is a school district which does not receive sufficient State formula aid payments during the current fiscal year, the amount of money the school district shall be eligible for from savings as a result of a voluntary wage freeze may be reduced by the amount of payments made by the State on behalf of the school district which have not been reimbursed by the school district, subject to the approval of the Director of the Division of Budget and Accounting. Notwithstanding the provisions of any law or regulation to the contrary, the grant funds shall be appropriated into the district's general fund budget for use in the 2010-2011 school year.~~

Explanation

The fiscal year 2010-2011 Appropriations Act provided an incentive for school district employees covered by a collective bargaining agreement to forgo any salary increase due pursuant to the agreement. Specifically, the State provided a grant to a school district equal to the amount saved in social security tax reimbursement resulting from the salary freeze. The proposed fiscal year 2011-2012 budget does not continue the incentive program.

Federal Enhancing Education Through Technology Grant

Deletion

2011 Handbook: p. B-53
2012 Budget: p.

~~From federal funds that are available via the enhancing Education Through Technology (EETT) program, the New Jersey Department of Education shall dedicate such funds to the continuation of Teaching and Learning with Essential New Technologies in the 21st Century (TALENT21), by which competitive grants are awarded to school districts for the purchase or lease of wireless computer hardware, software and training. Twenty five percent of any grant award shall be innovative new teaching methods. The New Jersey Department of Education shall award grants pursuant to a competitive process and in a manner that complies with applicable federal law. Funding shall enable the purchase of the following components: hardware and software; including wireless laptop computers; broadband internet access; access to digital content that is aligned to State standards; professional development for teachers; and technical support.~~

Explanation

EXPLANATION: FY 2011 language not recommended for FY 2012 denoted by strikethrough. Recommended FY 2012 language that did not appear in FY 2011 denoted by underlining.

Significant Language Changes (Cont'd)

Language included in the fiscal year 2010-2011 Appropriations Act included language requiring that funds received through the federal Enhancing Education through Technology grant program must be used to continue the Teaching and Learning with Essential New Technologies in the 21st Century grant program. The proposed budget would eliminate this restriction.

Enrollment Adjustment of State School Aid

Deletion

2011 Handbook: p. B-54
2012 Budget: p.

~~Notwithstanding the provisions of subsection a. of section 5 of P.L.1996, c.138 (C.18A:7F-5) or any other law or regulation to the contrary, no adjustments shall be made to State Aid amounts payable during the 2010-2011 school year based on adjustments to the 2009-2010 allocations using actual pupil counts.~~

Explanation

The fiscal year 2010-2011 Appropriations Act included language specifying that a school district's State school aid for the year would not be adjusted based on differences between the projected and actual enrollment. The method by which State aid would be provided to school districts in the proposed fiscal year 2011-2012 budget does not consider a district's enrollment; as such, the above language is not necessary.

Consumer Price Index Calculation

Deletion

2011 Handbook: p. B-54
2012 Budget: p.

~~Notwithstanding the provisions of section 3 of P.L.2007, c.260 (C.18A:7F-45) or any other law or regulation to the contrary, "CPI" means the rate of annual percentage increase calculated in accordance with section 2 of P.L. 1999, c. 168 (C.52:27D-442).~~

Explanation

The fiscal year 2010-2011 Appropriations Act replaced the definition of CPI as used in the school funding law with the inflation rate used to provide Consolidated Municipal Property Tax Relief Aid; this change reduced the CPI for education purposes from 1.6 percent to zero. The proposed fiscal year 2011-2012

EXPLANATION: FY 2011 language not recommended for FY 2012 denoted by strikethrough.
Recommended FY 2012 language that did not appear in FY 2011 denoted by underlining.

Significant Language Changes (Cont'd)

budget eliminates this language, thereby allowing the use of the current CPI, 1.23 percent.

The elimination of this language impacts the amount of revenue resident districts must transfer to charter schools. Section 12 of P.L.1995, c.426 requires that, among other revenue, the resident district transfer an amount equal to 90 percent of the previous year's tax levy per pupil, inflated by the CPI, to charter schools attended by its resident students. Because this language is not repeated in fiscal year 2011-2012, districts' per pupil tax levies from the 2010-2011 school year will be increased by 1.23 percent when determining the amount of revenue that will be transferred to charter schools.

In other areas, language included in the proposed budget prevents the use of the current CPI. For example, language related to the provision of preschool education aid (page D-87) does not provide for a CPI increase in per pupil aid for any of the school districts. Similarly, the method for providing K-12 aid (page D-101) does not account for changes in the CPI.

State School Aid Calculation

Revision

2011 Handbook: p. B-54
2012 Budget: p. D-101

Notwithstanding the provisions of any law or regulation to the contrary, a district's ~~2010–2011~~ 2011-2012 allocation of ~~the sum of the following aid categories:~~ Equalization Aid, Educational Adequacy Aid, Security Aid, Adjustment Aid, ~~School Choice~~, Special Education Categorical Aid, and Transportation Aid shall ~~be reduced by an amount equal to the lesser of 4.994% of equal~~ the district's ~~total general fund appropriations in the district's adopted 2009–2010 budget or the sum of its~~ 2010--2011 initial allocation ~~of the aforementioned categories of aid~~ increased by an amount equal to 1% of the district's total general fund appropriations in the district's adopted 2009-2010 budget. The ~~commissioner shall determine~~ increase will be allocated in such a manner as to restore reductions made in 2010-2011 in the reverse of the hierarchy ~~of aid categories used~~ for reduction ~~2010-2011 reductions.~~

Explanation

Language included in the proposed fiscal year 2011-2012 budget establishes a method for allocating State school aid to districts in lieu of the approach included in the "School Funding Reform Act of 2008." Specifically, the language provides that districts will initially receive an allocation of State aid for equalization aid, educational adequacy aid, security aid, adjustment aid, special education aid, and

EXPLANATION: FY 2011 language not recommended for FY 2012 denoted by strikethrough.
Recommended FY 2012 language that did not appear in FY 2011 denoted by underlining.

Significant Language Changes (Cont'd)

transportation aid, equal to what was received in the 2010-2011 fiscal year. Next, all districts will receive additional aid equal to one percent of the school districts' fiscal year 2009-2010 general fund budget; this increase, in most cases, equals approximately 20 percent of the total State school aid reduction in the 2010-2011 school year. The additional aid is added to the State aid categories in the following order: special education categorical aid, equalization aid, security aid, transportation aid, and adjustment aid. The additional aid is added to an aid category until the fiscal year 2011-2012 aid equals the district's fiscal year 2010-2011 aid entitlement in that category prior to the implementation of the aid reduction. Once the threshold is reached, any remaining additional aid is then added to the next aid category in the hierarchy.

Required Tax Levy Increase in Certain Former Abbott Districts

Deletion

2011 Handbook: p. B-55
2012 Budget: p.

~~Notwithstanding the provisions of any law or regulation to the contrary, as a condition of payment of amounts hereinabove appropriated for State Aid, districts that meet the eligibility criteria for Educational Adequacy Aid pursuant to the provisions of subsection b. of section 16 of P.L.2007, c. 260 (C.18A:7F-58), shall be required to raise a local levy in the budget year in an amount that equals the lesser of the applicable required percentage increase and the amount necessary to meet adequacy.~~

Explanation

The school funding law required that school districts eligible to receive educational adequacy aid raise a minimum tax levy calculated differently than that of other school districts between the 2008-2009 and 2010-2011 school years. Since this requirement no longer exists, the above clarifying language is no longer necessary and is removed from the proposed fiscal year 2011-2012 budget.

Salaries Supported by State Fiscal Stabilization Fund

Deletion

2011 Handbook: p. B-55
2012 Budget: p.

~~Notwithstanding the provisions of any law or regulation to the contrary, the amounts hereinabove appropriated as General Formula Aid — Federal Economic Stimulus funded from the State Fiscal Stabilization Fund under the American Recovery and Reinvestment~~

EXPLANATION: FY 2011 language not recommended for FY 2012 denoted by strikethrough.
Recommended FY 2012 language that did not appear in FY 2011 denoted by underlining.

Significant Language Changes (Cont'd)

~~Act of 2009, are subject to the following condition: expenditures for teacher salaries made by school districts from such appropriations are deemed to be considered State supported for the purposes of reimbursement of fringe costs required under N.J.S.18A:66-90.~~

Explanation

Under current law, school districts are required to reimburse the State for certain fringe benefits costs paid for by the State for district employees whose salaries are supported by federal funds. The fiscal year 2010-2011 Appropriations Act included language that excluded salaries that were paid using State Fiscal Stabilization Fund (SFSF) revenues from this requirement. Under the federal stimulus law that created the SFSF, funds received were required to be expended within two years, or would have to be returned to the federal Department of Education. Since the funds were awarded to school districts during the 2009-2010 fiscal year, the revenue will not be available in the upcoming fiscal year, thereby making the language obsolete.

State Fiscal Stabilization Fund to Charter Schools

Deletion

2011 Handbook: p. B-55
2012 Budget: p.

~~Notwithstanding the provisions of any law or regulation to the contrary, all funds allocated to charter schools by the districts of residence shall be deemed to be paid from appropriations for State Aid and not from appropriations from the State Fiscal Stabilization Fund under the American Recovery and Reinvestment Act of 2009.~~

Explanation

The above language was initially included in the fiscal year 2009-2010 Appropriations Act at the Executive Branch's request. Under the provisions of the federal "American Recovery and Reinvestment Act of 2009" (ARRA), school districts were required to submit an application to receive revenue from the State Fiscal Stabilization Fund (SFSF), a portion of which would be transferred to charter schools. The objective of the language was to prevent charter schools from having to submit an application as well. Since the ARRA required that all SFSF revenue be expended within two years of receipt or returned to the federal Department of Education, no SFSF funds will be transferred to charter schools in fiscal year 2011-2012, and the language is no longer necessary.

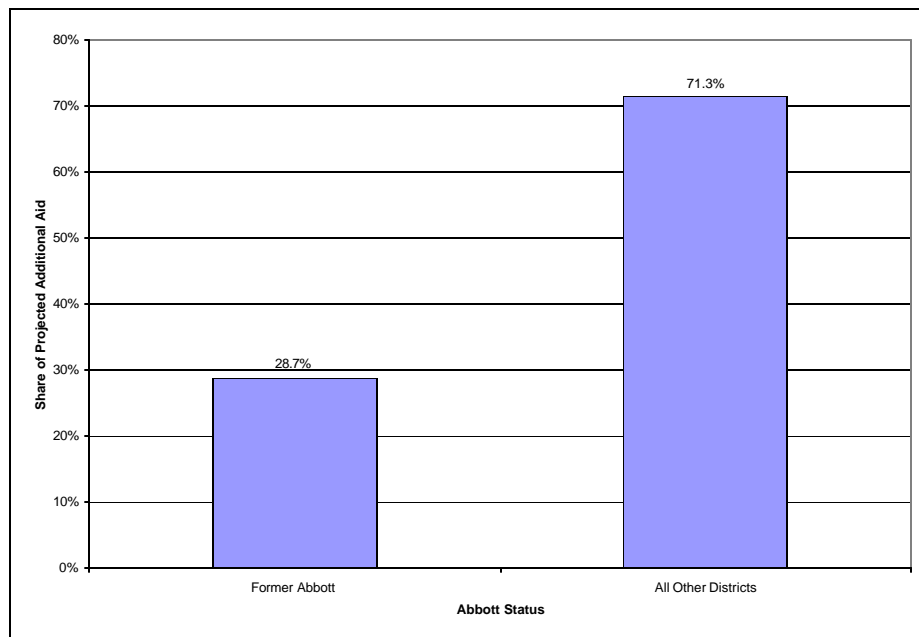
EXPLANATION: FY 2011 language not recommended for FY 2012 denoted by strikethrough.
Recommended FY 2012 language that did not appear in FY 2011 denoted by underlining.

Background Paper: State School Aid Pursuant to the “School Funding Reform Act of 2008”

The proposed fiscal year 2011-2012 budget allocates State aid to school districts in a manner that deviates from the parameters and formulas included in the “School Funding Reform Act of 2008” (SFRA). This background paper estimates the amount of additional appropriation that would be necessary to provide aid based on the current school funding law. It also explores how the additional funding would be distributed to school districts.

The Office of Legislative Services estimates that providing State aid to school districts in fiscal year 2011-2012 pursuant to the provisions of SFRA would require an appropriation of \$8.805 billion.¹ By way of comparison, the proposed budget appropriates \$7.068 billion in school aid, suggesting that an additional \$1.737 billion would have to be appropriated in order to provide funding consistent with the school funding law.² Providing State aid pursuant to SFRA would decrease the share of total aid that would be allocated to the 31 former Abbott districts. Under the proposed fiscal year 2011-2012 budget, 56.4 percent of all aid is allocated to these districts; in contrast, the provisions of SFRA would allocate 50.9 percent of the aid to the former Abbott districts. Figure 1 shows that the majority of additional funding associated with providing State aid pursuant to the SFRA would be awarded to districts that were not classified as Abbott districts; more than 70 percent of the additional funding, \$1.238 billion would be awarded to such districts.

Figure 1
Districts’ Share of Projected Additional State School Aid Assuming Full Funding of SFRA



¹ The calculation of the FY 2012 State school aid amounts assumes State aid in FY 2011 was also allocated pursuant to the SFRA.

² These figures reflect formula aid provided to school districts, including equalization aid, special education and security categorical aids, adjustment aid, school choice aid, and educational adequacy aid. They omit preschool education aid, extraordinary special education aid, and debt service aid, as well as aid provided on behalf of school districts, such as social security reimbursements, post-retirement medical benefits, and contributions to the Teachers’ Pension and Annuity Fund.

Background Paper: State School Aid Pursuant to the “School Funding Reform Act of 2008” (Cont’d)

Providing State school aid pursuant to SFRA in fiscal year 2011-2012 would yield an increase of 28.6 percent in aid to school districts Statewide. As Figure 2 shows, the percent change in aid varies considerably across districts in different socioeconomic classifications; if SFRA were fully funded, districts classified in district factor group (DFG) I³ would have State aid more than double, while DFG J districts would experience a more than seven-fold increase. The steep changes in aid depicted in Figure 2 reflect the fact that districts in higher DFG classifications received the largest percent decreases in aid during the 2010-2011 school year.

Figure 2
Increase in State Aid Relative to Fiscal Year 2010-2011
Assumes Full Funding of SFRA

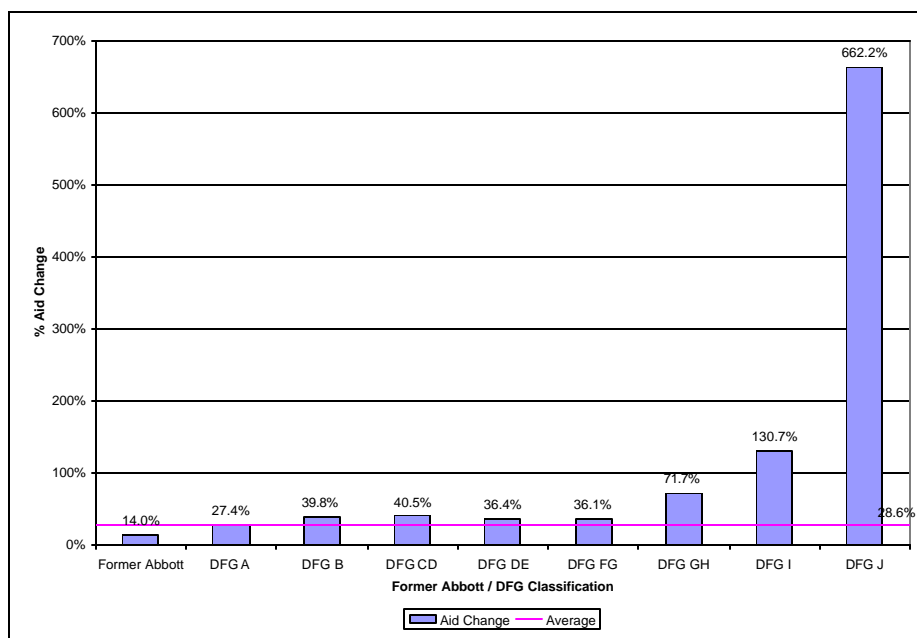


Figure 3 provides an alternative perspective by showing the increase in aid associated with providing full funding of SFRA as a share of school districts’ 2010-2011 general fund budgets. This approach accounts for the fact that a large percentage increase in aid would have a relatively small budgetary effect in a district that relies more heavily on revenue sources other than State aid to support their budgets.

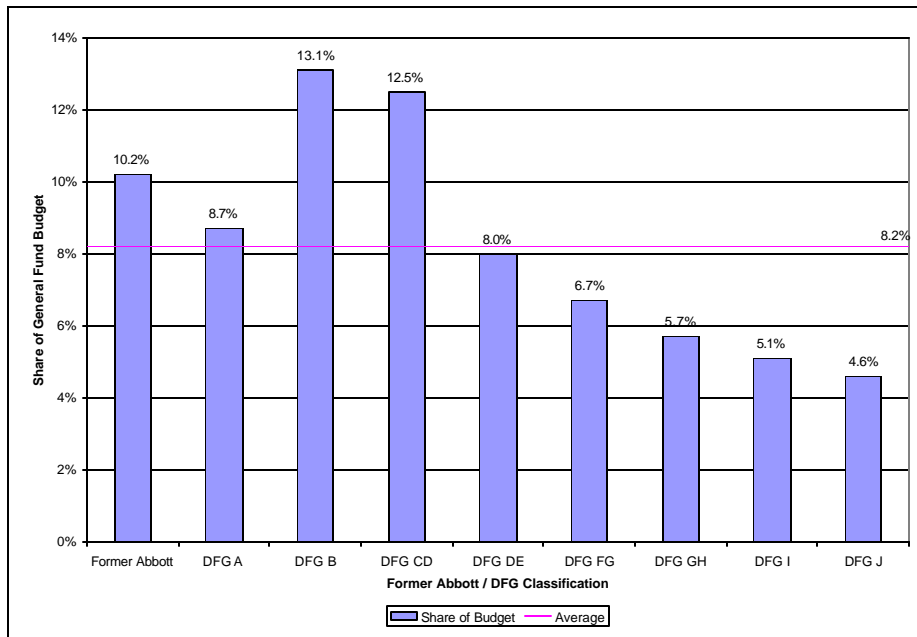
On average, fully funding SFRA would provide an amount of additional aid equal to 8.2 percent of districts’ fiscal year 2010-2011 budgets. As illustrated in this figure, former Abbott districts and other districts at the lower end of the socioeconomic spectrum would receive larger increases as a share of their total budgets. In contrast, DFG I and J districts, those that would receive the largest aid increase in percentage terms (as shown in Figure 2) would see the smallest impact relative to their overall budget.

³ The district factor group classification was developed by the Department of Education, and classifies most school districts in one of eight categories based on relative measures of socioeconomic status (SES) using Census data. DFG A includes the group of districts with the lowest SES, while J includes districts with the highest SES.

Background Paper: State School Aid Pursuant to the “School Funding Reform Act of 2008” (Cont’d)

Table 1 compares the amount of State school aid awarded to each school district under the proposed fiscal year 2011-2012 budget and what would be awarded under the provisions of SFRA. It should be noted that some school districts (e.g., Newark, Jersey City, county vocational and some regional school districts) are included in more than one legislative district. Table 2 lists the amount of additional State school aid each district would receive under SFRA as a share of the fiscal year 2010-2011 general fund budget.

Figure 3
Additional Aid as Share of 2010-2011 General Fund Budget



Background Paper: State School Aid Pursuant to the "School Funding Reform Act of 2008" (Cont'd)

Table 1
FY 2011-2012 State School Aid: Proposed and Estimated SFRA Full Funding
(in millions)

Leg. Dist.	County	District	FY 2012 - Gov. Budget Message	FY 2012 - SFRA	\$ Difference	% Difference
1	Atlantic	Atlantic Co Vocational	\$3.270	\$5.310	\$2.039	62.4%
1	Atlantic	Buena Regional	\$18.341	\$21.295	\$2.954	16.1%
1	Atlantic	Mainland Regional	\$6.647	\$8.564	\$1.918	28.9%
1	Atlantic	Somers Point City	\$5.143	\$5.804	\$0.661	12.8%
1	Cape May	Avalon Boro	\$0.033	\$0.097	\$0.065	198.3%
1	Cape May	Cape May City	\$0.377	\$0.500	\$0.123	32.6%
1	Cape May	Cape May Co Vocational	\$1.129	\$1.754	\$0.625	55.4%
1	Cape May	Cape May Point	\$0.027	\$0.029	\$0.002	8.8%
1	Cape May	Dennis Twp	\$6.336	\$6.513	\$0.178	2.8%
1	Cape May	Lower Cape May Regional	\$9.054	\$10.100	\$1.046	11.6%
1	Cape May	Lower Twp	\$9.538	\$10.544	\$1.006	10.6%
1	Cape May	Middle Twp	\$12.541	\$14.160	\$1.618	12.9%
1	Cape May	North Wildwood City	\$0.658	\$1.003	\$0.345	52.4%
1	Cape May	Ocean City	\$0.635	\$2.179	\$1.544	243.1%
1	Cape May	Sea Isle City	\$0.181	\$0.349	\$0.168	92.5%
1	Cape May	Stone Harbor Boro	\$0.025	\$0.065	\$0.040	162.0%
1	Cape May	Upper Twp	\$9.568	\$10.880	\$1.311	13.7%
1	Cape May	West Cape May Boro	\$0.141	\$0.185	\$0.045	32.0%
1	Cape May	West Wildwood	\$0.019	\$0.073	\$0.054	283.2%
1	Cape May	Wildwood City	\$4.970	\$5.691	\$0.721	14.5%
1	Cape May	Wildwood Crest Boro	\$0.495	\$0.761	\$0.266	53.9%
1	Cape May	Woodbine Boro	\$2.879	\$2.988	\$0.110	3.8%
1	Cumberland	Cumberland Co Vocational	\$3.626	\$4.549	\$0.923	25.5%
1	Cumberland	Maurice River Twp	\$4.086	\$4.370	\$0.285	7.0%
1	Cumberland	Millville City	\$64.493	\$67.937	\$3.444	5.3%
1	Cumberland	Vineland City	\$129.679	\$136.514	\$6.834	5.3%
		Legislative District Total	\$293.889	\$322.214	\$28.325	9.6%
2	Atlantic	Absecon City	\$1.165	\$2.291	\$1.126	96.6%
2	Atlantic	Atlantic City	\$15.216	\$20.957	\$5.741	37.7%
2	Atlantic	Atlantic Co Vocational	\$3.270	\$5.310	\$2.039	62.4%
2	Atlantic	Brigantine City	\$2.299	\$3.054	\$0.755	32.8%
2	Atlantic	Corbin City	\$0.686	\$0.745	\$0.059	8.6%
2	Atlantic	Egg Harbor City	\$4.887	\$5.198	\$0.312	6.4%
2	Atlantic	Egg Harbor Twp	\$36.454	\$58.692	\$22.238	61.0%
2	Atlantic	Estell Manor City	\$1.905	\$2.051	\$0.146	7.7%
2	Atlantic	Galloway Twp	\$21.708	\$24.903	\$3.195	14.7%
2	Atlantic	Greater Egg Harbor Reg	\$29.118	\$36.529	\$7.411	25.5%
2	Atlantic	Hamilton Twp	\$21.007	\$27.024	\$6.017	28.6%
2	Atlantic	Linwood City	\$1.501	\$2.025	\$0.524	34.9%
2	Atlantic	Longport	\$0.087	\$0.133	\$0.046	53.2%
2	Atlantic	Mainland Regional	\$6.647	\$8.564	\$1.918	28.9%

Background Paper: State School Aid Pursuant to the "School Funding Reform Act of 2008" (Cont'd)

Leg. Dist.	County	District	FY 2012 - Gov. Budget Message	FY 2012 - SFRA	\$ Difference	% Difference
2	Atlantic	Margate City	\$0.390	\$0.932	\$0.542	139.2%
2	Atlantic	Mullica Twp	\$5.196	\$5.561	\$0.365	7.0%
2	Atlantic	Northfield City	\$3.492	\$5.278	\$1.787	51.2%
2	Atlantic	Pleasantville City	\$61.922	\$64.514	\$2.592	4.2%
2	Atlantic	Port Republic City	\$0.916	\$1.015	\$0.099	10.8%
2	Atlantic	Ventnor City	\$1.741	\$2.556	\$0.815	46.8%
2	Atlantic	Weymouth Twp	\$2.307	\$2.484	\$0.177	7.7%
		Legislative District Total	\$221.913	\$279.817	\$57.904	26.1%
3	Cumberland	Bridgeton City	\$61.535	\$79.256	\$17.721	28.8%
3	Cumberland	Commercial Twp	\$10.025	\$10.678	\$0.653	6.5%
3	Cumberland	Cumberland Co Vocational	\$3.626	\$4.549	\$0.923	25.5%
3	Cumberland	Cumberland Regional	\$11.436	\$12.853	\$1.417	12.4%
3	Cumberland	Deerfield Twp	\$2.309	\$3.301	\$0.992	43.0%
3	Cumberland	Downe Twp	\$1.653	\$1.780	\$0.127	7.7%
3	Cumberland	Fairfield Twp	\$5.833	\$6.129	\$0.296	5.1%
3	Cumberland	Greenwich Twp	\$0.412	\$0.450	\$0.038	9.2%
3	Cumberland	Hopewell Twp	\$3.203	\$3.481	\$0.278	8.7%
3	Cumberland	Lawrence Twp	\$5.526	\$5.572	\$0.046	0.8%
3	Cumberland	Stow Creek Twp	\$0.808	\$0.881	\$0.074	9.1%
3	Cumberland	Upper Deerfield Twp	\$5.836	\$6.336	\$0.500	8.6%
3	Gloucester	Clayton Boro	\$8.984	\$12.287	\$3.302	36.8%
3	Gloucester	Clearview Regional	\$13.630	\$16.068	\$2.438	17.9%
3	Gloucester	East Greenwich Twp	\$2.427	\$4.152	\$1.725	71.1%
3	Gloucester	Elk Twp	\$2.294	\$2.500	\$0.205	8.9%
3	Gloucester	Gateway Regional	\$6.466	\$7.144	\$0.678	10.5%
3	Gloucester	Gloucester Co Vocational	\$7.058	\$10.185	\$3.127	44.3%
3	Gloucester	Greenwich Twp	\$1.070	\$1.500	\$0.430	40.2%
3	Gloucester	Harrison Twp	\$5.576	\$6.763	\$1.186	21.3%
3	Gloucester	Kingsway Regional	\$6.864	\$11.530	\$4.666	68.0%
3	Gloucester	Logan Twp	\$5.150	\$5.870	\$0.721	14.0%
3	Gloucester	Mantua Twp	\$5.865	\$6.574	\$0.708	12.1%
3	Gloucester	National Park Boro	\$1.980	\$2.249	\$0.269	13.6%
3	Gloucester	Paulsboro Boro	\$11.644	\$12.979	\$1.335	11.5%
3	Gloucester	South Harrison Twp	\$1.097	\$1.784	\$0.686	62.6%
3	Gloucester	Delsea Regional H.S Dist.	\$12.684	\$14.006	\$1.322	10.4%
3	Gloucester	Swedesboro-Woolwich	\$5.341	\$8.767	\$3.426	64.1%
3	Gloucester	Wenonah Boro	\$0.430	\$0.550	\$0.119	27.8%
3	Gloucester	West Deptford Twp	\$10.858	\$12.511	\$1.653	15.2%
3	Salem	Alloway Twp	\$3.551	\$3.858	\$0.307	8.6%
3	Salem	Elmer Boro	\$1.463	\$1.784	\$0.321	21.9%
3	Salem	Elsinboro Twp	\$0.483	\$0.567	\$0.084	17.4%
3	Salem	Lower Alloways Creek	\$0.942	\$1.128	\$0.187	19.8%
3	Salem	Mannington Twp	\$0.553	\$0.681	\$0.128	23.1%
3	Salem	Oldmans Twp	\$1.628	\$1.808	\$0.179	11.0%
3	Salem	Penns Grv-Carney's Pt Reg	\$20.218	\$23.672	\$3.454	17.1%

Background Paper: State School Aid Pursuant to the "School Funding Reform Act of 2008" (Cont'd)

Leg. Dist.	County	District	FY 2012 - Gov. Budget Message	FY 2012 - SFRA	\$ Difference	% Difference
3	Salem	Pennsville	\$7.973	\$10.780	\$2.807	35.2%
3	Salem	Pittsgrove Twp	\$12.031	\$12.986	\$0.956	7.9%
3	Salem	Quinton Twp	\$3.004	\$3.238	\$0.234	7.8%
3	Salem	Salem City	\$15.659	\$16.514	\$0.855	5.5%
3	Salem	Salem County Vocational	\$4.291	\$6.610	\$2.318	54.0%
3	Salem	Upper Pittsgrove Twp	\$3.031	\$3.310	\$0.279	9.2%
3	Salem	Woodstown-Pilesgrove Reg	\$6.358	\$7.227	\$0.869	13.7%
		Legislative District Total	\$302.807	\$366.846	\$64.039	21.1%
4	Camden	Black Horse Pike Regional	\$30.990	\$37.937	\$6.947	22.4%
4	Camden	Camden County Vocational	\$20.701	\$26.485	\$5.784	27.9%
4	Camden	Clementon Boro	\$6.088	\$6.922	\$0.833	13.7%
4	Camden	Gloucester Twp	\$47.964	\$51.618	\$3.654	7.6%
4	Camden	Laurel Springs Boro	\$1.585	\$1.924	\$0.338	21.3%
4	Camden	Lindenwold Boro	\$22.476	\$26.549	\$4.073	18.1%
4	Gloucester	Franklin Twp	\$8.074	\$9.258	\$1.184	14.7%
4	Gloucester	Glassboro	\$15.153	\$16.510	\$1.357	9.0%
4	Gloucester	Gloucester Co Vocational	\$7.058	\$10.185	\$3.127	44.3%
4	Gloucester	Monroe Twp	\$31.704	\$45.744	\$14.039	44.3%
4	Gloucester	Newfield Boro	\$1.305	\$1.898	\$0.593	45.5%
4	Gloucester	Pitman Boro	\$9.250	\$10.119	\$0.869	9.4%
4	Gloucester	Delsea Regional H.S Dist.	\$12.684	\$14.006	\$1.322	10.4%
4	Gloucester	Washington Twp	\$48.561	\$53.730	\$5.169	10.6%
		Legislative District Total	\$263.595	\$312.884	\$49.290	18.7%
5	Camden	Audubon Boro	\$6.807	\$7.590	\$0.783	11.5%
5	Camden	Barrington Boro	\$2.877	\$4.154	\$1.278	44.4%
5	Camden	Bellmawr Boro	\$4.447	\$7.123	\$2.676	60.2%
5	Camden	Black Horse Pike Regional	\$30.990	\$37.937	\$6.947	22.4%
5	Camden	Brooklawn Boro	\$3.764	\$3.841	\$0.076	2.0%
5	Camden	Camden City	\$269.588	\$281.426	\$11.838	4.4%
5	Camden	Camden County Vocational	\$20.701	\$26.485	\$5.784	27.9%
5	Camden	Gloucester City	\$28.862	\$30.537	\$1.675	5.8%
5	Camden	Haddon Heights Boro	\$0.991	\$1.787	\$0.796	80.3%
5	Camden	Hi Nella	\$0.741	\$0.800	\$0.059	8.0%
5	Camden	Lawnside Boro	\$3.462	\$4.551	\$1.089	31.5%
5	Camden	Magnolia Boro	\$2.887	\$3.361	\$0.474	16.4%
5	Camden	Mount Ephraim Boro	\$3.393	\$4.061	\$0.668	19.7%
5	Camden	Runnemede Boro	\$4.330	\$6.366	\$2.036	47.0%
5	Camden	Somerdale Boro	\$2.506	\$3.864	\$1.357	54.2%
5	Camden	Sterling High School Dist	\$5.534	\$7.683	\$2.149	38.8%
5	Camden	Stratford Boro	\$3.863	\$5.670	\$1.807	46.8%
5	Camden	Woodlynne Boro	\$6.442	\$8.893	\$2.451	38.0%
5	Gloucester	Deptford Twp	\$21.332	\$25.551	\$4.218	19.8%
5	Gloucester	Gateway Regional	\$6.466	\$7.144	\$0.678	10.5%
5	Gloucester	Gloucester Co Vocational	\$7.058	\$10.185	\$3.127	44.3%

Background Paper: State School Aid Pursuant to the "School Funding Reform Act of 2008" (Cont'd)

Leg. Dist.	County	District	FY 2012 - Gov. Budget Message	FY 2012 - SFRA	\$ Difference	% Difference
5	Gloucester	Westville Boro	\$2.297	\$2.482	\$0.185	8.0%
5	Gloucester	Woodbury City	\$11.003	\$14.201	\$3.198	29.1%
5	Gloucester	Woodbury Heights Boro	\$0.921	\$1.047	\$0.127	13.8%
		Legislative District Total	\$451.264	\$506.741	\$55.477	12.3%
6	Camden	Berlin Boro	\$3.265	\$4.285	\$1.019	31.2%
6	Camden	Berlin Twp	\$4.785	\$5.613	\$0.828	17.3%
6	Camden	Camden County Vocational	\$20.701	\$26.485	\$5.784	27.9%
6	Camden	Cherry Hill Twp	\$9.655	\$19.985	\$10.330	107.0%
6	Camden	Chesilhurst	\$2.469	\$2.484	\$0.015	0.6%
6	Camden	Collingswood Boro	\$9.776	\$10.962	\$1.186	12.1%
6	Camden	Eastern Camden County Reg	\$8.578	\$9.910	\$1.332	15.5%
6	Camden	Gibbsboro Boro	\$1.317	\$1.489	\$0.172	13.1%
6	Camden	Haddon Twp	\$7.698	\$9.339	\$1.641	21.3%
6	Camden	Haddonfield	\$0.319	\$1.603	\$1.284	402.6%
6	Camden	Oaklyn Boro	\$2.216	\$2.819	\$0.602	27.2%
6	Camden	Pine Hill Boro	\$15.255	\$16.540	\$1.286	8.4%
6	Camden	Voorhees Twp	\$4.594	\$6.480	\$1.886	41.0%
6	Camden	Waterford Twp	\$11.403	\$12.714	\$1.310	11.5%
6	Camden	Winslow Twp	\$43.512	\$47.210	\$3.697	8.5%
		Legislative District Total	\$145.546	\$177.918	\$32.373	22.2%
7	Burlington	Beverly City	\$3.483	\$3.740	\$0.258	7.4%
7	Burlington	Burlington City	\$15.786	\$16.954	\$1.167	7.4%
7	Burlington	Burlington Co Vocational	\$13.373	\$14.714	\$1.341	10.0%
7	Burlington	Burlington Twp	\$16.743	\$27.294	\$10.551	63.0%
7	Burlington	Cinnaminson Twp	\$8.150	\$9.696	\$1.546	19.0%
7	Burlington	Delanco Twp	\$2.270	\$2.480	\$0.210	9.2%
7	Burlington	Delran Twp	\$10.346	\$15.762	\$5.417	52.4%
7	Burlington	Edgewater Park Twp	\$6.082	\$8.030	\$1.948	32.0%
7	Burlington	Florence Twp	\$8.782	\$10.247	\$1.465	16.7%
7	Burlington	Maple Shade Twp	\$7.659	\$12.757	\$5.098	66.6%
7	Burlington	Mount Holly Twp	\$9.748	\$10.461	\$0.712	7.3%
7	Burlington	Palmyra Boro	\$4.265	\$5.022	\$0.757	17.7%
7	Burlington	Rancocas Valley Regional	\$15.356	\$16.950	\$1.594	10.4%
7	Burlington	Riverside Twp	\$10.042	\$12.098	\$2.056	20.5%
7	Burlington	Riverton	\$0.446	\$0.636	\$0.190	42.5%
7	Burlington	Westampton	\$3.315	\$3.793	\$0.479	14.4%
7	Burlington	Willingboro Twp	\$37.167	\$39.905	\$2.739	7.4%
7	Camden	Camden County Vocational	\$20.701	\$26.485	\$5.784	27.9%
7	Camden	Merchantville Boro	\$1.569	\$1.812	\$0.243	15.5%
7	Camden	Pennsauken Twp	\$44.642	\$59.280	\$14.638	32.8%
		Legislative District Total	\$239.927	\$298.118	\$58.191	24.3%
8	Burlington	Burlington Co Vocational	\$13.373	\$14.714	\$1.341	10.0%
8	Burlington	Eastampton Twp	\$4.482	\$4.834	\$0.352	7.9%

Background Paper: State School Aid Pursuant to the "School Funding Reform Act of 2008" (Cont'd)

Leg. Dist.	County	District	FY 2012 - Gov. Budget Message	FY 2012 - SFRA	\$ Difference	% Difference
8	Burlington	Evesham Twp	\$12.230	\$15.099	\$2.868	23.5%
8	Burlington	Hainesport Twp	\$1.202	\$1.544	\$0.343	28.5%
8	Burlington	Lenape Regional	\$25.813	\$31.226	\$5.413	21.0%
8	Burlington	Lumberton Twp	\$7.810	\$8.698	\$0.888	11.4%
8	Burlington	Mansfield Twp	\$0.416	\$0.944	\$0.528	126.8%
8	Burlington	Medford Lakes Boro	\$0.964	\$1.621	\$0.657	68.2%
8	Burlington	Medford Twp	\$3.868	\$6.116	\$2.249	58.1%
8	Burlington	Moorestown Twp	\$2.118	\$4.583	\$2.465	116.4%
8	Burlington	Mount Laurel Twp	\$3.434	\$5.809	\$2.375	69.2%
8	Burlington	Pemberton Twp	\$80.659	\$84.614	\$3.954	4.9%
8	Burlington	Rancocas Valley Regional	\$15.356	\$16.950	\$1.594	10.4%
8	Burlington	Shamong Twp	\$3.852	\$4.356	\$0.505	13.1%
8	Burlington	Southampton Twp	\$1.980	\$2.449	\$0.469	23.7%
8	Burlington	Springfield Twp	\$1.161	\$1.340	\$0.179	15.4%
8	Burlington	Tabernacle Twp	\$5.324	\$5.847	\$0.523	9.8%
8	Burlington	Woodland Twp	\$0.870	\$0.968	\$0.098	11.2%
		Legislative District Total	\$184.912	\$211.713	\$26.801	14.5%
9	Atlantic	Atlantic Co Vocational	\$3.270	\$5.310	\$2.039	62.4%
9	Atlantic	Folsom Boro	\$5.042	\$5.458	\$0.417	8.3%
9	Atlantic	Hammonton Town	\$11.686	\$19.180	\$7.494	64.1%
9	Burlington	Bass River Twp	\$0.866	\$0.928	\$0.062	7.1%
9	Burlington	Burlington Co Vocational	\$13.373	\$14.714	\$1.341	10.0%
9	Burlington	Washington Twp	\$0.640	\$0.714	\$0.074	11.5%
9	Ocean	Barneget Twp	\$19.230	\$21.097	\$1.867	9.7%
9	Ocean	Beach Haven Boro	\$0.015	\$0.073	\$0.058	380.3%
9	Ocean	Berkeley Twp	\$1.833	\$2.969	\$1.137	62.0%
9	Ocean	Central Regional	\$2.767	\$3.931	\$1.164	42.1%
9	Ocean	Eagleswood Twp	\$0.669	\$0.763	\$0.093	14.0%
9	Ocean	Lacey Twp	\$20.168	\$22.614	\$2.446	12.1%
9	Ocean	Lakehurst Boro	\$5.830	\$6.273	\$0.443	7.6%
9	Ocean	Little Egg Harbor Twp	\$9.294	\$10.168	\$0.873	9.4%
9	Ocean	Long Beach Island	\$0.265	\$0.511	\$0.246	93.0%
9	Ocean	Manchester Twp	\$4.795	\$6.605	\$1.810	37.7%
9	Ocean	Ocean County Vocational	\$5.136	\$6.155	\$1.019	19.8%
9	Ocean	Ocean Gate Boro	\$0.876	\$0.986	\$0.110	12.5%
9	Ocean	Ocean Twp	\$6.824	\$7.507	\$0.684	10.0%
9	Ocean	Pinelands Regional	\$11.137	\$12.367	\$1.229	11.0%
9	Ocean	Southern Regional	\$1.009	\$3.155	\$2.146	212.6%
9	Ocean	Stafford Twp	\$8.512	\$9.842	\$1.330	15.6%
9	Ocean	Toms River Regional	\$64.145	\$71.351	\$7.206	11.2%
9	Ocean	Tuckerton Boro	\$1.331	\$1.519	\$0.189	14.2%
		Legislative District Total	\$198.712	\$234.190	\$35.478	17.9%
10	Monmouth	Manasquan Boro	\$0.228	\$1.012	\$0.784	344.2%
10	Monmouth	Monmouth Co Vocational	\$7.399	\$9.401	\$2.002	27.1%

Background Paper: State School Aid Pursuant to the "School Funding Reform Act of 2008" (Cont'd)

Leg. Dist.	County	District	FY 2012 - Gov. Budget Message	FY 2012 - SFRA	\$ Difference	% Difference
10	Ocean	Bay Head Boro	\$0.030	\$0.076	\$0.047	158.6%
10	Ocean	Brick Twp	\$33.579	\$38.218	\$4.639	13.8%
10	Ocean	Island Heights Boro	\$0.105	\$0.184	\$0.079	75.0%
10	Ocean	Lavallette Boro	\$0.133	\$0.269	\$0.136	102.0%
10	Ocean	Ocean County Vocational	\$5.136	\$6.155	\$1.019	19.8%
10	Ocean	Point Pleasant Boro	\$5.387	\$6.809	\$1.422	26.4%
10	Ocean	Point Pleasant Beach	\$0.300	\$0.816	\$0.516	171.8%
10	Ocean	Seaside Heights Boro	\$0.793	\$0.938	\$0.146	18.4%
10	Ocean	Seaside Park Boro	\$0.157	\$0.220	\$0.064	40.5%
10	Ocean	Toms River Regional	\$64.145	\$71.351	\$7.206	11.2%
		Legislative District Total	\$117.392	\$135.450	\$18.058	15.4%
11	Monmouth	Allenhurst	\$0.047	\$0.057	\$0.011	23.2%
11	Monmouth	Asbury Park City	\$55.012	\$57.521	\$2.510	4.6%
11	Monmouth	Atlantic Highlands Boro	\$0.073	\$0.264	\$0.191	259.4%
11	Monmouth	Avon Boro	\$0.098	\$0.234	\$0.136	138.6%
11	Monmouth	Belmar Boro	\$0.801	\$1.223	\$0.422	52.7%
11	Monmouth	Bradley Beach Boro	\$0.942	\$1.215	\$0.273	29.0%
11	Monmouth	Brielle Boro	\$0.206	\$0.733	\$0.527	255.7%
11	Monmouth	Deal Boro	\$0.028	\$0.137	\$0.109	390.0%
11	Monmouth	Eatontown Boro	\$3.494	\$4.248	\$0.754	21.6%
11	Monmouth	Henry Hudson Regional	\$0.777	\$1.123	\$0.347	44.6%
11	Monmouth	Highlands Boro	\$0.547	\$0.700	\$0.153	28.1%
11	Monmouth	Interlaken	\$0.043	\$0.066	\$0.022	52.1%
11	Monmouth	Long Branch City	\$37.559	\$42.170	\$4.611	12.3%
11	Monmouth	Monmouth Beach Boro	\$0.069	\$0.256	\$0.186	268.9%
11	Monmouth	Monmouth Co Vocational	\$7.399	\$9.401	\$2.002	27.1%
11	Monmouth	Monmouth Regional	\$3.519	\$4.386	\$0.866	24.6%
11	Monmouth	Neptune City	\$1.755	\$2.844	\$1.089	62.1%
11	Monmouth	Neptune Twp	\$29.733	\$32.683	\$2.950	9.9%
11	Monmouth	Ocean Twp	\$7.241	\$9.896	\$2.655	36.7%
11	Monmouth	Rumson Boro	\$0.136	\$0.798	\$0.662	486.4%
11	Monmouth	Rumson-Fair Haven Reg	\$0.162	\$0.769	\$0.607	374.3%
11	Monmouth	Sea Girt Boro	\$0.043	\$0.187	\$0.144	336.9%
11	Monmouth	Shore Regional	\$0.191	\$0.785	\$0.594	310.6%
11	Monmouth	Lake Como	\$0.536	\$0.663	\$0.127	23.7%
11	Monmouth	Spring Lake Boro	\$0.075	\$0.349	\$0.274	365.2%
11	Monmouth	Spring Lake Heights Boro	\$0.190	\$0.483	\$0.293	153.9%
11	Monmouth	Wall Twp	\$2.578	\$4.973	\$2.396	92.9%
11	Monmouth	West Long Branch Boro	\$0.102	\$0.467	\$0.366	359.6%
		Legislative District Total	\$153.355	\$178.632	\$25.277	16.5%
12	Mercer	East Windsor Regional	\$16.371	\$23.582	\$7.211	44.0%
12	Mercer	Mercer County Vocational	\$2.220	\$2.656	\$0.437	19.7%
12	Monmouth	Colts Neck Twp	\$0.630	\$1.477	\$0.846	134.3%
12	Monmouth	Fair Haven Boro	\$0.185	\$0.687	\$0.502	271.7%

Background Paper: State School Aid Pursuant to the "School Funding Reform Act of 2008" (Cont'd)

Leg. Dist.	County	District	FY 2012 - Gov. Budget Message	FY 2012 - SFRA	\$ Difference	% Difference
12	Monmouth	Freehold Boro	\$8.529	\$13.282	\$4.753	55.7%
12	Monmouth	Freehold Regional	\$46.351	\$59.985	\$13.633	29.4%
12	Monmouth	Freehold Twp	\$2.962	\$6.757	\$3.795	128.1%
12	Monmouth	Little Silver Boro	\$0.112	\$0.571	\$0.458	407.8%
12	Monmouth	Manalapan-Englishtown Reg	\$18.594	\$21.434	\$2.839	15.3%
12	Monmouth	Marlboro Twp	\$9.989	\$12.500	\$2.511	25.1%
12	Monmouth	Millstone Twp	\$4.129	\$5.484	\$1.354	32.8%
12	Monmouth	Monmouth Co Vocational	\$7.399	\$9.401	\$2.002	27.1%
12	Monmouth	Monmouth Regional	\$3.519	\$4.386	\$0.866	24.6%
12	Monmouth	Oceanport Boro	\$0.273	\$0.679	\$0.407	149.1%
12	Monmouth	Red Bank Boro	\$1.914	\$3.626	\$1.713	89.5%
12	Monmouth	Red Bank Regional	\$0.575	\$1.516	\$0.942	163.9%
12	Monmouth	Rumson-Fair Haven Reg	\$0.162	\$0.769	\$0.607	374.3%
12	Monmouth	Shrewsbury Boro	\$0.108	\$0.386	\$0.278	256.0%
12	Monmouth	Tinton Falls	\$3.158	\$4.204	\$1.046	33.1%
		Legislative District Total	\$127.180	\$173.381	\$46.201	36.3%
13	Middlesex	Middlesex Co Vocational	\$11.971	\$15.686	\$3.716	31.0%
13	Middlesex	Old Bridge Twp	\$41.141	\$47.615	\$6.474	15.7%
13	Monmouth	Hazlet Twp	\$11.592	\$16.280	\$4.687	40.4%
13	Monmouth	Holmdel Twp	\$0.905	\$3.431	\$2.526	279.1%
13	Monmouth	Keansburg Boro	\$27.275	\$28.392	\$1.117	4.1%
13	Monmouth	Keyport Boro	\$5.026	\$6.518	\$1.492	29.7%
13	Monmouth	Matawan-Aberdeen Regional	\$10.651	\$15.711	\$5.060	47.5%
13	Monmouth	Middletown Twp	\$15.187	\$20.987	\$5.800	38.2%
13	Monmouth	Monmouth Co Vocational	\$7.399	\$9.401	\$2.002	27.1%
13	Monmouth	Union Beach	\$8.078	\$9.702	\$1.624	20.1%
		Legislative District Total	\$139.225	\$173.722	\$34.497	24.8%
14	Mercer	Hamilton Twp	\$69.158	\$79.025	\$9.867	14.3%
14	Mercer	Mercer County Vocational	\$2.220	\$2.656	\$0.437	19.7%
14	Mercer	W Windsor-Plainsboro Reg	\$4.642	\$12.936	\$8.294	178.7%
14	Middlesex	Cranbury Twp	\$0.176	\$0.879	\$0.702	398.5%
14	Middlesex	Jamesburg Boro	\$4.460	\$7.091	\$2.631	59.0%
14	Middlesex	Middlesex Co Vocational	\$11.971	\$15.686	\$3.716	31.0%
14	Middlesex	Monroe Twp	\$1.126	\$5.649	\$4.524	401.8%
14	Middlesex	South Brunswick Twp	\$20.180	\$33.332	\$13.152	65.2%
		Legislative District Total	\$113.933	\$157.254	\$43.321	38.0%
15	Mercer	Ewing Twp	\$8.206	\$13.800	\$5.595	68.2%
15	Mercer	Hopewell Valley Regional	\$1.312	\$4.119	\$2.807	213.9%
15	Mercer	Lawrence Twp	\$2.249	\$4.936	\$2.687	119.5%
15	Mercer	Mercer County Vocational	\$2.220	\$2.656	\$0.437	19.7%
15	Mercer	Princeton Regional	\$2.488	\$5.440	\$2.952	118.6%
15	Mercer	Trenton City	\$217.875	\$227.990	\$10.116	4.6%
		Legislative District Total	\$234.349	\$258.941	\$24.592	10.5%

Background Paper: State School Aid Pursuant to the "School Funding Reform Act of 2008" (Cont'd)

Leg. Dist.	County	District	FY 2012 - Gov. Budget Message	FY 2012 - SFRA	\$ Difference	% Difference
16	Morris	Mendham Boro	\$0.092	\$0.492	\$0.400	432.6%
16	Morris	Morris County Vocational	\$0.932	\$1.615	\$0.684	73.4%
16	Morris	West Morris Regional	\$3.598	\$5.430	\$1.832	50.9%
16	Somerset	Bedminster Twp	\$0.392	\$0.989	\$0.597	152.3%
16	Somerset	Bernards Twp	\$1.625	\$5.654	\$4.029	247.9%
16	Somerset	Bound Brook Boro	\$6.660	\$10.849	\$4.189	62.9%
16	Somerset	Branchburg Twp	\$1.189	\$3.184	\$1.995	167.7%
16	Somerset	Bridgewater-Raritan Reg	\$6.718	\$14.591	\$7.873	117.2%
16	Somerset	Hillsborough Twp	\$22.218	\$33.136	\$10.918	49.1%
16	Somerset	Manville Boro	\$4.659	\$7.751	\$3.092	66.4%
16	Somerset	Montgomery Twp	\$2.581	\$7.756	\$5.175	200.5%
16	Somerset	Somerset Co Vocational	\$1.226	\$1.886	\$0.661	53.9%
16	Somerset	Somerset Hills Regional	\$0.340	\$1.786	\$1.446	424.8%
16	Somerset	Somerville Boro	\$4.502	\$7.898	\$3.396	75.4%
16	Somerset	South Bound Brook	\$3.042	\$4.512	\$1.469	48.3%
		Legislative District Total	\$59.776	\$107.531	\$47.755	79.9%
17	Middlesex	Highland Park Boro	\$3.123	\$4.100	\$0.977	31.3%
17	Middlesex	Middlesex Co Vocational	\$11.971	\$15.686	\$3.716	31.0%
17	Middlesex	Milltown Boro	\$0.839	\$1.669	\$0.831	99.1%
17	Middlesex	New Brunswick City	\$99.144	\$120.717	\$21.572	21.8%
17	Middlesex	North Brunswick Twp	\$9.474	\$18.202	\$8.728	92.1%
17	Middlesex	Piscataway Twp	\$12.941	\$24.196	\$11.254	87.0%
17	Somerset	Franklin Twp	\$10.358	\$20.326	\$9.968	96.2%
17	Somerset	Somerset Co Vocational	\$1.226	\$1.886	\$0.661	53.9%
		Legislative District Total	\$149.076	\$206.783	\$57.707	38.7%
18	Middlesex	East Brunswick Twp	\$15.146	\$24.745	\$9.600	63.4%
18	Middlesex	Edison Twp	\$9.679	\$23.062	\$13.383	138.3%
18	Middlesex	Metuchen Boro	\$0.483	\$1.793	\$1.310	270.9%
18	Middlesex	Middlesex Co Vocational	\$11.971	\$15.686	\$3.716	31.0%
18	Middlesex	South Plainfield Boro	\$7.767	\$14.408	\$6.641	85.5%
18	Middlesex	South River Boro	\$11.445	\$17.970	\$6.525	57.0%
18	Middlesex	Spotswood	\$5.321	\$8.234	\$2.913	54.8%
		Legislative District Total	\$61.811	\$105.898	\$44.087	71.3%
19	Middlesex	Carteret Boro	\$24.413	\$38.035	\$13.622	55.8%
19	Middlesex	Middlesex Co Vocational	\$11.971	\$15.686	\$3.716	31.0%
19	Middlesex	Perth Amboy City	\$120.021	\$162.633	\$42.612	35.5%
19	Middlesex	Sayreville Boro	\$18.417	\$30.848	\$12.430	67.5%
19	Middlesex	South Amboy City	\$6.045	\$6.968	\$0.923	15.3%
19	Middlesex	Woodbridge Twp	\$19.415	\$38.077	\$18.662	96.1%
		Legislative District Total	\$200.281	\$292.246	\$91.965	45.9%
20	Union	Elizabeth City	\$274.244	\$365.378	\$91.134	33.2%

Background Paper: State School Aid Pursuant to the "School Funding Reform Act of 2008" (Cont'd)

Leg. Dist.	County	District	FY 2012 - Gov. Budget Message	FY 2012 - SFRA	\$ Difference	% Difference
20	Union	Kenilworth Boro	\$3.184	\$4.896	\$1.712	53.8%
20	Union	Roselle Boro	\$21.806	\$31.437	\$9.630	44.2%
20	Union	Union County Vocational	\$5.088	\$8.447	\$3.360	66.0%
20	Union	Union Twp	\$27.419	\$41.264	\$13.845	50.5%
		Legislative District Total	\$331.741	\$451.422	\$119.681	36.1%
21	Essex	Essex Co Voc-Tech	\$19.128	\$26.911	\$7.783	40.7%
21	Essex	Millburn Twp	\$0.765	\$3.628	\$2.863	374.5%
21	Morris	Sch Dist Of The Chathams	\$0.926	\$3.504	\$2.579	278.5%
21	Morris	Harding Township	\$0.091	\$0.441	\$0.350	386.8%
21	Morris	Madison Boro	\$0.349	\$1.822	\$1.472	421.5%
21	Morris	Morris County Vocational	\$0.932	\$1.615	\$0.684	73.4%
21	Morris	Long Hill Twp	\$0.386	\$0.949	\$0.564	146.3%
21	Somerset	Somerset Co Vocational	\$1.226	\$1.886	\$0.661	53.9%
21	Somerset	Warren Twp	\$0.527	\$2.074	\$1.547	293.7%
21	Somerset	Watchung Boro	\$0.218	\$0.736	\$0.518	237.4%
21	Somerset	Watchung Hills Regional	\$0.346	\$1.922	\$1.576	456.1%
21	Union	Berkeley Heights Twp	\$0.426	\$2.249	\$1.823	427.7%
21	Union	Cranford Twp	\$1.271	\$4.818	\$3.547	279.0%
21	Union	Garwood Boro	\$0.312	\$0.610	\$0.298	95.5%
21	Union	Mountainside Boro	\$0.203	\$0.980	\$0.778	383.6%
21	Union	New Providence Boro	\$0.323	\$1.611	\$1.288	399.2%
21	Union	Roselle Park Boro	\$9.546	\$14.086	\$4.540	47.6%
21	Union	Springfield Twp	\$0.329	\$1.712	\$1.383	420.6%
21	Union	Summit City	\$0.598	\$2.798	\$2.201	368.1%
21	Union	Union County Vocational	\$5.088	\$8.447	\$3.360	66.0%
21	Union	Westfield Town	\$1.294	\$4.728	\$3.434	265.5%
		Legislative District Total	\$44.281	\$87.529	\$43.248	97.7%
22	Middlesex	Dunellen Boro	\$4.821	\$7.735	\$2.915	60.5%
22	Middlesex	Middlesex Boro	\$7.945	\$12.057	\$4.112	51.8%
22	Middlesex	Middlesex Co Vocational	\$11.971	\$15.686	\$3.716	31.0%
22	Somerset	Green Brook Twp	\$0.550	\$1.673	\$1.123	204.0%
22	Somerset	North Plainfield Boro	\$22.653	\$35.720	\$13.067	57.7%
22	Somerset	Somerset Co Vocational	\$1.226	\$1.886	\$0.661	53.9%
22	Union	Clark Twp	\$0.414	\$2.469	\$2.054	495.6%
22	Union	Linden City	\$18.980	\$30.492	\$11.511	60.6%
22	Union	Plainfield City	\$95.624	\$117.966	\$22.343	23.4%
22	Union	Rahway City	\$18.638	\$30.040	\$11.402	61.2%
22	Union	Scotch Plains-Fanwood Reg	\$1.429	\$5.453	\$4.023	281.4%
22	Union	Union County Vocational	\$5.088	\$8.447	\$3.360	66.0%
22	Union	Winfield Twp	\$1.512	\$1.619	\$0.107	7.1%
		Legislative District Total	\$190.851	\$271.243	\$80.392	42.1%
23	Hunterdon	Alexandria Twp	\$1.469	\$1.823	\$0.355	24.1%
23	Hunterdon	Bethlehem Twp	\$1.343	\$1.706	\$0.363	27.0%

Background Paper: State School Aid Pursuant to the "School Funding Reform Act of 2008" (Cont'd)

Leg. Dist.	County	District	FY 2012 - Gov. Budget Message	FY 2012 - SFRA	\$ Difference	% Difference
23	Hunterdon	Bloomsbury Boro	\$0.995	\$1.268	\$0.273	27.5%
23	Hunterdon	Clinton Town	\$1.096	\$1.461	\$0.365	33.3%
23	Hunterdon	Clinton Twp	\$0.584	\$1.728	\$1.144	196.0%
23	Hunterdon	Delaware Twp	\$0.872	\$1.184	\$0.312	35.8%
23	Hunterdon	Delaware Valley Regional	\$3.658	\$4.840	\$1.182	32.3%
23	Hunterdon	East Amwell Twp	\$0.550	\$0.838	\$0.288	52.4%
23	Hunterdon	Flemington-Raritan Reg	\$5.098	\$8.649	\$3.551	69.7%
23	Hunterdon	Franklin Twp	\$0.143	\$0.365	\$0.222	155.9%
23	Hunterdon	Frenchtown Boro	\$0.552	\$0.650	\$0.097	17.6%
23	Hunterdon	Hampton Boro	\$0.816	\$0.921	\$0.105	12.8%
23	Hunterdon	High Bridge Boro	\$1.366	\$1.625	\$0.259	19.0%
23	Hunterdon	Holland Twp	\$1.531	\$2.330	\$0.799	52.2%
23	Hunterdon	Hunterdon Central Reg	\$4.299	\$8.075	\$3.775	87.8%
23	Hunterdon	Hunterdon Co Vocational	\$0.854	\$1.041	\$0.187	21.9%
23	Hunterdon	Kingwood Twp	\$1.187	\$1.439	\$0.251	21.2%
23	Hunterdon	Lambertville City	\$0.129	\$0.255	\$0.126	98.3%
23	Hunterdon	Lebanon Boro	\$0.060	\$0.152	\$0.092	153.6%
23	Hunterdon	Lebanon Twp	\$1.824	\$2.370	\$0.546	29.9%
23	Hunterdon	Milford Boro	\$0.226	\$0.308	\$0.082	36.4%
23	Hunterdon	N Hunt/Voorhees Regional	\$4.431	\$7.381	\$2.949	66.6%
23	Hunterdon	Readington Twp	\$0.825	\$2.092	\$1.267	153.6%
23	Hunterdon	South Hunterdon Regional	\$0.355	\$0.700	\$0.345	97.0%
23	Hunterdon	Stockton Boro	\$0.007	\$0.017	\$0.010	155.0%
23	Hunterdon	Union Twp	\$0.457	\$0.827	\$0.370	80.8%
23	Hunterdon	West Amwell Twp	\$0.185	\$0.344	\$0.159	86.1%
23	Warren	Allamuchy Twp	\$0.403	\$0.707	\$0.305	75.7%
23	Warren	Alpha Boro	\$1.742	\$2.440	\$0.698	40.1%
23	Warren	Belvidere Town	\$2.673	\$3.158	\$0.485	18.1%
23	Warren	Blairstown Twp	\$1.773	\$2.405	\$0.633	35.7%
23	Warren	Franklin Twp	\$0.651	\$0.841	\$0.190	29.2%
23	Warren	Frelinghuysen Twp	\$0.586	\$0.690	\$0.104	17.8%
23	Warren	Great Meadows Regional	\$5.651	\$6.410	\$0.759	13.4%
23	Warren	Greenwich Twp	\$5.306	\$6.645	\$1.339	25.2%
23	Warren	Hackettstown	\$4.351	\$6.591	\$2.240	51.5%
23	Warren	Harmony Twp	\$0.259	\$0.534	\$0.276	106.7%
23	Warren	Hope Twp	\$0.897	\$1.071	\$0.175	19.5%
23	Warren	Knowlton Twp	\$1.357	\$1.526	\$0.169	12.5%
23	Warren	Lopatcong Twp	\$2.975	\$4.946	\$1.971	66.3%
23	Warren	Mansfield Twp	\$3.250	\$3.731	\$0.481	14.8%
23	Warren	North Warren Regional	\$4.735	\$5.399	\$0.664	14.0%
23	Warren	Oxford Twp	\$2.300	\$2.534	\$0.234	10.2%
23	Warren	Phillipsburg Town	\$35.805	\$37.864	\$2.058	5.7%
23	Warren	Pohatcong Twp	\$1.612	\$2.056	\$0.445	27.6%
23	Warren	Warren County Vocational	\$2.845	\$3.715	\$0.870	30.6%
23	Warren	Warren Hills Regional	\$9.749	\$11.068	\$1.319	13.5%
23	Warren	Washington Boro	\$2.521	\$3.707	\$1.186	47.1%

Background Paper: State School Aid Pursuant to the "School Funding Reform Act of 2008" (Cont'd)

Leg. Dist.	County	District	FY 2012 - Gov. Budget Message	FY 2012 - SFRA	\$ Difference	% Difference
23	Warren	Washington Twp	\$2.542	\$2.861	\$0.319	12.6%
23	Warren	White Twp	\$1.757	\$2.102	\$0.345	19.6%
		Legislative District Total	\$130.650	\$167.389	\$36.740	28.1%
24	Hunterdon	Califon Boro	\$0.208	\$0.357	\$0.149	71.5%
24	Hunterdon	Hunterdon Co Vocational	\$0.854	\$1.041	\$0.187	21.9%
24	Hunterdon	N Hunt/Voorhees Regional	\$4.431	\$7.381	\$2.949	66.6%
24	Hunterdon	Tewksbury Twp	\$0.289	\$0.867	\$0.578	200.3%
24	Morris	Chester Twp	\$0.664	\$1.509	\$0.845	127.3%
24	Morris	Morris County Vocational	\$0.932	\$1.615	\$0.684	73.4%
24	Morris	Mount Olive Twp	\$13.584	\$19.999	\$6.415	47.2%
24	Morris	Netcong Boro	\$0.951	\$1.599	\$0.649	68.2%
24	Morris	Washington Twp	\$7.167	\$9.769	\$2.602	36.3%
24	Morris	West Morris Regional	\$3.598	\$5.430	\$1.832	50.9%
24	Sussex	Andover Reg	\$2.238	\$2.803	\$0.565	25.3%
24	Sussex	Byram Twp	\$3.173	\$3.713	\$0.540	17.0%
24	Sussex	Frankford Twp	\$2.079	\$2.466	\$0.387	18.6%
24	Sussex	Franklin Boro	\$3.076	\$3.386	\$0.310	10.1%
24	Sussex	Fredon Twp	\$0.435	\$0.766	\$0.332	76.3%
24	Sussex	Green Twp	\$1.862	\$2.244	\$0.382	20.5%
24	Sussex	Hamburg Boro	\$1.615	\$1.801	\$0.187	11.6%
24	Sussex	Hampton Twp	\$1.205	\$1.453	\$0.248	20.6%
24	Sussex	Hardyston Twp	\$1.925	\$2.343	\$0.419	21.8%
24	Sussex	High Point Regional	\$6.271	\$7.180	\$0.908	14.5%
24	Sussex	Hopatcong	\$11.526	\$12.540	\$1.014	8.8%
24	Sussex	Kittatinny Regional	\$5.585	\$6.387	\$0.802	14.4%
24	Sussex	Lafayette Twp	\$0.545	\$0.697	\$0.152	27.8%
24	Sussex	Lenape Valley Regional	\$3.767	\$4.305	\$0.537	14.3%
24	Sussex	Montague Twp	\$2.500	\$2.833	\$0.333	13.3%
24	Sussex	Newton Town	\$5.346	\$6.789	\$1.444	27.0%
24	Sussex	Ogdensburg Boro	\$1.960	\$2.033	\$0.073	3.7%
24	Sussex	Sandyston-Walpack Twp	\$0.538	\$0.650	\$0.112	20.9%
24	Sussex	Sparta Twp	\$5.067	\$7.243	\$2.175	42.9%
24	Sussex	Stanhope Boro	\$1.397	\$1.607	\$0.210	15.0%
24	Sussex	Stillwater Twp	\$1.812	\$2.016	\$0.204	11.3%
24	Sussex	Sussex-Wantage Regional	\$7.386	\$8.271	\$0.884	12.0%
24	Sussex	Sussex County Vocational	\$3.967	\$4.456	\$0.489	12.3%
24	Sussex	Vernon Twp	\$25.127	\$27.678	\$2.551	10.2%
24	Sussex	Wallkill Valley Regional	\$4.459	\$5.008	\$0.549	12.3%
		Legislative District Total	\$137.536	\$170.232	\$32.696	23.8%
25	Morris	Boonton Town	\$0.687	\$1.920	\$1.233	179.4%
25	Morris	Boonton Twp	\$0.249	\$0.828	\$0.579	232.8%
25	Morris	Denville Twp	\$0.705	\$1.760	\$1.055	149.5%
25	Morris	Dover Town	\$22.244	\$34.066	\$11.822	53.1%
25	Morris	Jefferson Twp	\$14.574	\$17.291	\$2.717	18.6%

Background Paper: State School Aid Pursuant to the "School Funding Reform Act of 2008" (Cont'd)

Leg. Dist.	County	District	FY 2012 - Gov. Budget Message	FY 2012 - SFRA	\$ Difference	% Difference
25	Morris	Mendham Twp	\$0.156	\$0.929	\$0.774	497.7%
25	Morris	Mine Hill Twp	\$2.107	\$3.028	\$0.921	43.7%
25	Morris	Morris County Vocational	\$0.932	\$1.615	\$0.684	73.4%
25	Morris	Morris Hills Regional	\$4.784	\$8.434	\$3.651	76.3%
25	Morris	Morris School District	\$4.530	\$8.460	\$3.930	86.7%
25	Morris	Mount Arlington Boro	\$0.385	\$0.789	\$0.403	104.7%
25	Morris	Mountain Lakes Boro	\$0.338	\$0.951	\$0.613	181.6%
25	Morris	Randolph Twp	\$11.210	\$15.255	\$4.045	36.1%
25	Morris	Rockaway Boro	\$0.335	\$0.900	\$0.565	168.8%
25	Morris	Rockaway Twp	\$1.850	\$4.474	\$2.624	141.8%
25	Morris	Roxbury Twp	\$12.131	\$17.357	\$5.226	43.1%
25	Morris	West Morris Regional	\$3.598	\$5.430	\$1.832	50.9%
25	Morris	Wharton Boro	\$3.042	\$5.012	\$1.970	64.7%
		Legislative District Total	\$83.858	\$128.500	\$44.642	53.2%
26	Morris	Butler Boro	\$1.660	\$2.434	\$0.774	46.6%
26	Morris	Sch Dist Of The Chathams	\$0.926	\$3.504	\$2.579	278.5%
26	Morris	East Hanover Twp	\$0.343	\$1.052	\$0.709	207.0%
26	Morris	Florham Park Boro	\$0.202	\$0.875	\$0.674	333.8%
26	Morris	Hanover Park Regional	\$0.293	\$1.706	\$1.413	483.0%
26	Morris	Hanover Twp	\$0.447	\$1.348	\$0.901	201.7%
26	Morris	Kinnelon Boro	\$0.880	\$2.470	\$1.590	180.7%
26	Morris	Lincoln Park Boro	\$1.277	\$2.039	\$0.762	59.7%
26	Morris	Montville Twp	\$0.670	\$3.897	\$3.227	481.7%
26	Morris	Morris County Vocational	\$0.932	\$1.615	\$0.684	73.4%
26	Morris	Morris Plains Boro	\$0.322	\$0.897	\$0.576	179.1%
26	Morris	Parsippany-Troy Hills Twp	\$2.324	\$8.883	\$6.559	282.2%
26	Morris	Pequannock Twp	\$1.510	\$2.937	\$1.427	94.5%
26	Morris	Riverdale Boro	\$0.129	\$0.386	\$0.257	198.8%
26	Passaic	Bloomingtondale Boro	\$1.640	\$2.295	\$0.656	40.0%
26	Passaic	Passaic County Vocational	\$17.908	\$29.564	\$11.657	65.1%
26	Passaic	Pompton Lakes Boro	\$3.228	\$5.271	\$2.043	63.3%
26	Passaic	West Milford Twp	\$13.590	\$16.216	\$2.626	19.3%
		Legislative District Total	\$48.279	\$87.392	\$39.113	81.0%
27	Essex	Caldwell-West Caldwell	\$0.385	\$1.896	\$1.511	392.2%
27	Essex	Essex Co Voc-Tech	\$19.128	\$26.911	\$7.783	40.7%
27	Essex	Essex Fells Boro	\$0.039	\$0.156	\$0.117	300.2%
27	Essex	Fairfield Twp	\$0.118	\$0.642	\$0.524	443.4%
27	Essex	Livingston Twp	\$0.918	\$4.668	\$3.750	408.7%
27	Essex	Newark City	\$681.061	\$727.965	\$46.904	6.9%
27	Essex	North Caldwell Boro	\$0.104	\$0.298	\$0.195	187.5%
27	Essex	City Of Orange Twp	\$64.149	\$71.701	\$7.552	11.8%
27	Essex	Roseland Boro	\$0.139	\$0.440	\$0.301	217.0%
27	Essex	South Orange-Maplewood	\$2.250	\$7.849	\$5.599	248.8%
27	Essex	West Essex Regional	\$0.480	\$1.838	\$1.358	282.6%

Background Paper: State School Aid Pursuant to the "School Funding Reform Act of 2008" (Cont'd)

Leg. Dist.	County	District	FY 2012 - Gov. Budget Message	FY 2012 - SFRA	\$ Difference	% Difference
27	Essex	West Orange Town	\$4.682	\$11.522	\$6.840	146.1%
		Legislative District Total	\$773.453	\$855.886	\$82.432	10.7%
28	Essex	Belleville Town	\$23.185	\$36.715	\$13.530	58.4%
28	Essex	Bloomfield Twp	\$18.086	\$30.589	\$12.504	69.1%
28	Essex	Essex Co Voc-Tech	\$19.128	\$26.911	\$7.783	40.7%
28	Essex	Irvington Township	\$107.764	\$113.872	\$6.108	5.7%
28	Essex	Newark City	\$681.061	\$727.965	\$46.904	6.9%
		Legislative District Total	\$849.224	\$936.052	\$86.828	10.2%
29	Essex	Essex Co Voc-Tech	\$19.128	\$26.911	\$7.783	40.7%
29	Essex	Newark City	\$681.061	\$727.965	\$46.904	6.9%
29	Union	Hillside Twp	\$19.493	\$28.254	\$8.761	44.9%
29	Union	Union County Vocational	\$5.088	\$8.447	\$3.360	66.0%
		Legislative District Total	\$724.770	\$791.577	\$66.807	9.2%
30	Burlington	Bordentown Regional	\$6.984	\$11.004	\$4.020	57.6%
30	Burlington	Burlington Co Vocational	\$13.373	\$14.714	\$1.341	10.0%
30	Burlington	Chesterfield Twp	\$0.126	\$0.548	\$0.421	333.0%
30	Burlington	New Hanover Twp	\$2.344	\$2.554	\$0.210	9.0%
30	Burlington	North Hanover Twp	\$10.462	\$11.350	\$0.888	8.5%
30	Burlington	Northern Burlington Reg	\$10.867	\$12.266	\$1.399	12.9%
30	Mercer	Mercer County Vocational	\$2.220	\$2.656	\$0.437	19.7%
30	Mercer	Robbinsville Twp	\$1.565	\$4.200	\$2.635	168.4%
30	Monmouth	Farmingdale Boro	\$0.723	\$0.818	\$0.095	13.1%
30	Monmouth	Howell Twp	\$30.679	\$35.328	\$4.649	15.2%
30	Monmouth	Monmouth Co Vocational	\$7.399	\$9.401	\$2.002	27.1%
30	Monmouth	Roosevelt Boro	\$0.710	\$0.746	\$0.036	5.1%
30	Monmouth	Upper Freehold Regional	\$4.054	\$5.339	\$1.285	31.7%
30	Ocean	Jackson Twp	\$47.217	\$51.805	\$4.589	9.7%
30	Ocean	Lakewood Twp	\$21.770	\$32.885	\$11.115	51.1%
30	Ocean	Ocean County Vocational	\$5.136	\$6.155	\$1.019	19.8%
30	Ocean	Plumsted Twp	\$10.848	\$11.797	\$0.949	8.7%
		Legislative District Total	\$176.478	\$213.565	\$37.088	21.0%
31	Hudson	Bayonne City	\$48.877	\$76.946	\$28.068	57.4%
31	Hudson	Hudson County Vocational	\$19.478	\$29.049	\$9.571	49.1%
31	Hudson	Jersey City	\$396.372	\$417.859	\$21.487	5.4%
		Legislative District Total	\$464.727	\$523.854	\$59.126	12.7%
32	Bergen	Bergen County Vocational	\$4.665	\$7.021	\$2.357	50.5%
32	Bergen	Fairview Boro	\$6.343	\$10.224	\$3.881	61.2%
32	Hudson	East Newark Boro	\$3.110	\$4.387	\$1.277	41.1%
32	Hudson	Harrison Town	\$18.864	\$24.954	\$6.090	32.3%
32	Hudson	Hudson County Vocational	\$19.478	\$29.049	\$9.571	49.1%
32	Hudson	Jersey City	\$396.372	\$417.859	\$21.487	5.4%

Background Paper: State School Aid Pursuant to the "School Funding Reform Act of 2008" (Cont'd)

Leg. Dist.	County	District	FY 2012 - Gov. Budget Message	FY 2012 - SFRA	\$ Difference	% Difference
32	Hudson	Kearny Town	\$27.501	\$44.237	\$16.736	60.9%
32	Hudson	North Bergen Twp	\$52.108	\$78.417	\$26.309	50.5%
32	Hudson	Secaucus Town	\$0.332	\$1.851	\$1.518	456.9%
		Legislative District Total	\$528.774	\$618.000	\$89.226	16.9%
33	Hudson	Guttenberg Town	\$4.185	\$6.858	\$2.674	63.9%
33	Hudson	Hoboken City	\$7.634	\$9.333	\$1.698	22.2%
33	Hudson	Hudson County Vocational	\$19.478	\$29.049	\$9.571	49.1%
33	Hudson	Jersey City	\$396.372	\$417.859	\$21.487	5.4%
33	Hudson	Union City	\$147.540	\$180.355	\$32.816	22.2%
33	Hudson	Weehawken Twp	\$2.344	\$3.154	\$0.810	34.6%
33	Hudson	West New York Town	\$76.016	\$90.756	\$14.740	19.4%
		Legislative District Total	\$653.568	\$737.364	\$83.796	12.8%
34	Essex	East Orange	\$171.439	\$179.617	\$8.178	4.8%
34	Essex	Essex Co Voc-Tech	\$19.128	\$26.911	\$7.783	40.7%
34	Essex	Glen Ridge Boro	\$0.268	\$1.470	\$1.202	448.5%
34	Essex	Montclair Town	\$4.649	\$9.038	\$4.389	94.4%
34	Passaic	Clifton City	\$22.134	\$40.095	\$17.961	81.1%
34	Passaic	Passaic Valley Regional	\$0.591	\$1.497	\$0.906	153.2%
34	Passaic	Passaic County Vocational	\$17.908	\$29.564	\$11.657	65.1%
34	Passaic	Woodland Park	\$0.471	\$1.482	\$1.011	214.7%
		Legislative District Total	\$236.588	\$289.675	\$53.087	22.4%
35	Bergen	Bergen County Vocational	\$4.665	\$7.021	\$2.357	50.5%
35	Bergen	Glen Rock Boro	\$0.406	\$2.050	\$1.644	404.7%
35	Passaic	Haledon Boro	\$6.188	\$9.615	\$3.427	55.4%
35	Passaic	Hawthorne Boro	\$1.357	\$3.875	\$2.519	185.7%
35	Passaic	North Haledon Boro	\$0.204	\$0.586	\$0.382	187.2%
35	Passaic	Passaic Co Manchester Reg	\$5.024	\$7.083	\$2.059	41.0%
35	Passaic	Passaic Valley Regional	\$0.591	\$1.497	\$0.906	153.2%
35	Passaic	Passaic County Vocational	\$17.908	\$29.564	\$11.657	65.1%
35	Passaic	Paterson City	\$370.991	\$409.492	\$38.502	10.4%
35	Passaic	Prospect Park Boro	\$7.207	\$10.995	\$3.788	52.6%
35	Passaic	Totowa Boro	\$0.171	\$0.734	\$0.562	328.4%
		Legislative District Total	\$414.711	\$482.513	\$67.802	16.3%
36	Bergen	Bergen County Vocational	\$4.665	\$7.021	\$2.357	50.5%
36	Bergen	Carlstadt Boro	\$0.089	\$0.476	\$0.387	434.6%
36	Bergen	Carlstadt-East Rutherford	\$0.142	\$0.557	\$0.415	292.3%
36	Bergen	East Rutherford Boro	\$0.392	\$0.916	\$0.524	133.7%
36	Bergen	Garfield City	\$45.510	\$54.498	\$8.988	19.7%
36	Bergen	Lyndhurst Twp	\$1.350	\$3.690	\$2.340	173.2%
36	Bergen	Moonachie Boro	\$0.297	\$0.605	\$0.308	103.8%
36	Bergen	North Arlington Boro	\$1.288	\$2.920	\$1.632	126.7%
36	Bergen	Rutherford Boro	\$1.743	\$3.221	\$1.479	84.9%

Background Paper: State School Aid Pursuant to the "School Funding Reform Act of 2008" (Cont'd)

Leg. Dist.	County	District	FY 2012 - Gov. Budget Message	FY 2012 - SFRA	\$ Difference	% Difference
36	Bergen	Wallington Boro	\$2.591	\$4.627	\$2.037	78.6%
36	Bergen	Wood-Ridge Boro	\$0.467	\$1.558	\$1.092	233.9%
36	Essex	Essex Co Voc-Tech	\$19.128	\$26.911	\$7.783	40.7%
36	Essex	Nutley Town	\$5.744	\$9.498	\$3.754	65.4%
36	Passaic	Passaic City	\$176.177	\$231.370	\$55.193	31.3%
36	Passaic	Passaic County Vocational	\$17.908	\$29.564	\$11.657	65.1%
		Legislative District Total	\$277.490	\$377.434	\$99.944	36.0%
37	Bergen	Bergen County Vocational	\$4.665	\$7.021	\$2.357	50.5%
37	Bergen	Bergenfield Boro	\$9.096	\$13.793	\$4.697	51.6%
37	Bergen	Bogota Boro	\$5.000	\$8.268	\$3.268	65.4%
37	Bergen	Englewood City	\$8.242	\$12.658	\$4.417	53.6%
37	Bergen	Englewood Cliffs Boro	\$0.109	\$0.517	\$0.409	376.5%
37	Bergen	Hackensack City	\$10.784	\$18.727	\$7.943	73.7%
37	Bergen	Leonia Boro	\$2.966	\$4.888	\$1.922	64.8%
37	Bergen	Maywood Boro	\$0.809	\$2.154	\$1.345	166.2%
37	Bergen	Palisades Park	\$1.437	\$3.287	\$1.851	128.8%
37	Bergen	Ridgefield Park Twp	\$4.058	\$7.565	\$3.507	86.4%
37	Bergen	Rochelle Park Twp	\$0.287	\$0.691	\$0.405	141.1%
37	Bergen	Teaneck Twp	\$4.008	\$7.608	\$3.600	89.8%
37	Bergen	Tenafly Boro	\$0.563	\$2.351	\$1.788	317.6%
		Legislative District Total	\$52.022	\$89.529	\$37.507	72.1%
38	Bergen	Bergen County Vocational	\$4.665	\$7.021	\$2.357	50.5%
38	Bergen	Cliffside Park Boro	\$2.534	\$4.013	\$1.479	58.4%
38	Bergen	Edgewater Boro	\$0.387	\$1.046	\$0.659	170.2%
38	Bergen	Elmwood Park	\$1.902	\$4.468	\$2.565	134.8%
38	Bergen	Fair Lawn Boro	\$1.893	\$6.145	\$4.252	224.6%
38	Bergen	Fort Lee Boro	\$0.952	\$3.212	\$2.260	237.5%
38	Bergen	Hasbrouck Heights Boro	\$0.649	\$1.917	\$1.268	195.3%
38	Bergen	Little Ferry Boro	\$1.084	\$2.576	\$1.492	137.6%
38	Bergen	Lodi Borough	\$12.822	\$21.365	\$8.543	66.6%
38	Bergen	Paramus Boro	\$0.718	\$3.647	\$2.929	407.9%
38	Bergen	Ridgefield Boro	\$1.859	\$4.609	\$2.749	147.9%
38	Bergen	Saddle Brook Twp	\$0.629	\$2.003	\$1.373	218.2%
38	Bergen	South Hackensack Twp	\$0.138	\$0.406	\$0.267	193.1%
38	Bergen	Teterboro	\$0.003	\$0.004	\$0.001	45.2%
		Legislative District Total	\$30.237	\$62.431	\$32.195	106.5%
39	Bergen	Allendale Boro	\$0.143	\$0.493	\$0.349	244.1%
39	Bergen	Alpine Boro	\$0.058	\$0.253	\$0.194	334.2%
39	Bergen	Bergen County Vocational	\$4.665	\$7.021	\$2.357	50.5%
39	Bergen	Closter Boro	\$0.165	\$0.823	\$0.658	399.0%
39	Bergen	Cresskill Boro	\$0.293	\$1.211	\$0.918	313.2%
39	Bergen	Demarest Boro	\$0.124	\$0.511	\$0.387	313.1%
39	Bergen	Dumont Boro	\$7.755	\$12.312	\$4.557	58.8%

Background Paper: State School Aid Pursuant to the "School Funding Reform Act of 2008" (Cont'd)

Leg. Dist.	County	District	FY 2012 - Gov. Budget Message	FY 2012 - SFRA	\$ Difference	% Difference
39	Bergen	Emerson Boro	\$0.179	\$1.015	\$0.836	467.3%
39	Bergen	Harrington Park Boro	\$0.104	\$0.613	\$0.509	487.0%
39	Bergen	Haworth Boro	\$0.080	\$0.378	\$0.298	370.0%
39	Bergen	Hillsdale Boro	\$0.467	\$1.567	\$1.100	235.4%
39	Bergen	Ho Ho Kus Boro	\$0.224	\$0.780	\$0.556	248.0%
39	Bergen	Montvale Boro	\$0.224	\$0.938	\$0.715	319.3%
39	Bergen	New Milford Boro	\$1.175	\$3.349	\$2.174	185.0%
39	Bergen	Northern Highlands Reg	\$0.239	\$0.994	\$0.756	316.8%
39	Bergen	Northern Valley Regional	\$0.469	\$2.113	\$1.644	350.4%
39	Bergen	Northvale Boro	\$0.084	\$0.460	\$0.376	448.3%
39	Bergen	Norwood Boro	\$0.254	\$0.603	\$0.349	137.5%
39	Bergen	Old Tappan Boro	\$0.144	\$0.616	\$0.472	328.5%
39	Bergen	Oradell Boro	\$0.140	\$0.568	\$0.428	305.3%
39	Bergen	Park Ridge Boro	\$0.232	\$0.961	\$0.728	313.5%
39	Bergen	Pascack Valley Regional	\$0.413	\$1.857	\$1.444	349.5%
39	Bergen	Ramsey Boro	\$0.474	\$2.372	\$1.898	400.4%
39	Bergen	River Dell Regional	\$0.256	\$1.222	\$0.966	376.8%
39	Bergen	River Edge Boro	\$0.169	\$1.057	\$0.888	524.5%
39	Bergen	River Vale Twp	\$0.186	\$0.856	\$0.670	360.1%
39	Bergen	Rockleigh	\$0.006	\$0.022	\$0.016	242.7%
39	Bergen	Saddle River Boro	\$0.082	\$0.390	\$0.308	376.6%
39	Bergen	Upper Saddle River Boro	\$0.201	\$1.015	\$0.814	404.3%
39	Bergen	Waldwick Boro	\$0.385	\$1.697	\$1.312	341.0%
39	Bergen	Westwood Regional	\$0.906	\$2.724	\$1.818	200.6%
39	Bergen	Woodcliff Lake Boro	\$0.130	\$0.620	\$0.490	375.3%
		Legislative District Total	\$20.428	\$51.409	\$30.981	151.7%
40	Bergen	Bergen County Vocational	\$4.665	\$7.021	\$2.357	50.5%
40	Bergen	Franklin Lakes Boro	\$0.296	\$1.301	\$1.005	339.5%
40	Bergen	Mahwah Twp	\$1.290	\$3.504	\$2.214	171.7%
40	Bergen	Midland Park Boro	\$0.265	\$1.245	\$0.980	370.3%
40	Bergen	Oakland Boro	\$0.252	\$1.273	\$1.022	406.1%
40	Bergen	Ramapo-Indian Hill Reg	\$0.464	\$2.486	\$2.022	436.3%
40	Bergen	Ridgewood Village	\$0.849	\$3.612	\$2.763	325.3%
40	Bergen	Wyckoff Twp	\$0.324	\$1.753	\$1.429	441.1%
40	Essex	Cedar Grove Twp	\$0.307	\$1.403	\$1.095	356.7%
40	Essex	Essex Co Voc-Tech	\$19.128	\$26.911	\$7.783	40.7%
40	Essex	Verona Boro	\$0.346	\$1.515	\$1.169	337.9%
40	Passaic	Lakeland Regional	\$4.364	\$5.799	\$1.434	32.9%
40	Passaic	Little Falls Twp	\$0.297	\$0.792	\$0.494	166.2%
40	Passaic	Passaic Valley Regional	\$0.591	\$1.497	\$0.906	153.2%
40	Passaic	Ringwood Boro	\$2.705	\$3.510	\$0.805	29.8%
40	Passaic	Wanaque Boro	\$2.176	\$3.191	\$1.015	46.6%
40	Passaic	Wayne Twp	\$1.587	\$7.151	\$5.565	350.8%
40		Legislative District Total	\$39.906	\$73.965	\$34.059	85.3%

Background Paper: State School Aid Pursuant to the "School Funding Reform Act of 2008" (Cont'd)

Table 2
Additional State School Aid under Full Funding of SFRA as Share of FY 2011 Budget

Leg. Dist.	County	District	Add'l Aid Under SFRA (millions)	Add'l Aid as % of FY 2011 Budget
1	Atlantic	Atlantic Co Vocational	\$2.039	17.1%
1	Atlantic	Buena Regional	\$2.954	8.3%
1	Atlantic	Mainland Regional	\$1.918	8.0%
1	Atlantic	Somers Point City	\$0.661	4.9%
1	Cape May	Avalon Boro	\$0.065	2.0%
1	Cape May	Cape May City	\$0.123	3.3%
1	Cape May	Cape May Co Vocational	\$0.625	4.3%
1	Cape May	Cape May Point	\$0.002	3.1%
1	Cape May	Dennis Twp	\$0.178	1.2%
1	Cape May	Lower Cape May Regional	\$1.046	3.8%
1	Cape May	Lower Twp	\$1.006	4.1%
1	Cape May	Middle Twp	\$1.618	4.2%
1	Cape May	North Wildwood City	\$0.345	3.9%
1	Cape May	Ocean City	\$1.544	4.1%
1	Cape May	Sea Isle City	\$0.168	4.3%
1	Cape May	Stone Harbor Boro	\$0.040	1.6%
1	Cape May	Upper Twp	\$1.311	4.0%
1	Cape May	West Cape May Boro	\$0.045	4.0%
1	Cape May	West Wildwood	\$0.054	3.4%
1	Cape May	Wildwood City	\$0.721	4.1%
1	Cape May	Wildwood Crest Boro	\$0.266	4.0%
1	Cape May	Woodbine Boro	\$0.110	2.6%
1	Cumberland	Cumberland Co Vocational	\$0.923	11.0%
1	Cumberland	Maurice River Twp	\$0.285	3.8%
1	Cumberland	Millville City	\$3.444	4.2%
1	Cumberland	Vineland City	\$6.834	4.2%
		Legislative District Total	\$28.325	4.8%
2	Atlantic	Absecon City	\$1.126	10.4%
2	Atlantic	Atlantic City	\$5.741	3.8%
2	Atlantic	Atlantic Co Vocational	\$2.039	17.1%
2	Atlantic	Brigantine City	\$0.755	3.9%
2	Atlantic	Corbin City	\$0.059	4.1%
2	Atlantic	Egg Harbor City	\$0.312	4.0%
2	Atlantic	Egg Harbor Twp	\$22.238	21.7%
2	Atlantic	Estell Manor City	\$0.146	3.5%
2	Atlantic	Galloway Twp	\$3.195	6.1%
2	Atlantic	Greater Egg Harbor Reg	\$7.411	11.6%
2	Atlantic	Hamilton Twp	\$6.017	15.8%
2	Atlantic	Linwood City	\$0.524	4.1%
2	Atlantic	Longport	\$0.046	4.4%
2	Atlantic	Mainland Regional	\$1.918	8.0%
2	Atlantic	Margate City	\$0.542	4.3%

Background Paper: State School Aid Pursuant to the "School Funding Reform Act of 2008" (Cont'd)

Leg. Dist.	County	District	Add'l Aid Under SFRA (millions)	Add'l Aid as % of FY 2011 Budget
2	Atlantic	Mullica Twp	\$0.365	4.1%
2	Atlantic	Northfield City	\$1.787	14.5%
2	Atlantic	Pleasantville City	\$2.592	3.6%
2	Atlantic	Port Republic City	\$0.099	4.1%
2	Atlantic	Ventnor City	\$0.815	4.1%
2	Atlantic	Weymouth Twp	\$0.177	4.0%
		Legislative District Total	\$57.904	9.1%
3	Cumberland	Bridgeton City	\$17.721	26.7%
3	Cumberland	Commercial Twp	\$0.653	5.2%
3	Cumberland	Cumberland Co Vocational	\$0.923	11.0%
3	Cumberland	Cumberland Regional	\$1.417	6.9%
3	Cumberland	Deerfield Twp	\$0.992	21.6%
3	Cumberland	Downe Twp	\$0.127	3.8%
3	Cumberland	Fairfield Twp	\$0.296	4.4%
3	Cumberland	Greenwich Twp	\$0.038	3.0%
3	Cumberland	Hopewell Twp	\$0.278	4.4%
3	Cumberland	Lawrence Twp	\$0.046	0.6%
3	Cumberland	Stow Creek Twp	\$0.074	4.1%
3	Cumberland	Upper Deerfield Twp	\$0.500	4.0%
3	Gloucester	Clayton Boro	\$3.302	19.2%
3	Gloucester	Clearview Regional	\$2.438	8.1%
3	Gloucester	East Greenwich Twp	\$1.725	14.6%
3	Gloucester	Elk Twp	\$0.205	4.2%
3	Gloucester	Gateway Regional	\$0.678	4.2%
3	Gloucester	Gloucester Co Vocational	\$3.127	17.5%
3	Gloucester	Greenwich Twp	\$0.430	3.7%
3	Gloucester	Harrison Twp	\$1.186	7.1%
3	Gloucester	Kingsway Regional	\$4.666	16.9%
3	Gloucester	Logan Twp	\$0.721	4.2%
3	Gloucester	Mantua Twp	\$0.708	4.2%
3	Gloucester	National Park Boro	\$0.269	7.2%
3	Gloucester	Paulsboro Boro	\$1.335	6.6%
3	Gloucester	South Harrison Twp	\$0.686	17.9%
3	Gloucester	Delsea Regional H.S Dist.	\$1.322	5.0%
3	Gloucester	Swedesboro-Woolwich	\$3.426	18.5%
3	Gloucester	Wenonah Boro	\$0.119	4.3%
3	Gloucester	West Deptford Twp	\$1.653	4.1%
3	Salem	Alloway Twp	\$0.307	4.3%
3	Salem	Elmer Boro	\$0.321	10.1%
3	Salem	Elsinboro Twp	\$0.084	4.1%
3	Salem	Lower Alloways Creek	\$0.187	4.1%
3	Salem	Mannington Twp	\$0.128	4.2%
3	Salem	Oldmans Twp	\$0.179	4.2%
3	Salem	Penns Grv-Carney's Pt Reg	\$3.454	10.7%
3	Salem	Pennsville	\$2.807	10.8%

Background Paper: State School Aid Pursuant to the "School Funding Reform Act of 2008" (Cont'd)

Leg. Dist.	County	District	Add'l Aid Under SFRA (millions)	Add'l Aid as % of FY 2011 Budget
3	Salem	Pittsgrove Twp	\$0.956	4.0%
3	Salem	Quinton Twp	\$0.234	4.4%
3	Salem	Salem City	\$0.855	4.0%
3	Salem	Salem County Vocational	\$2.318	33.1%
3	Salem	Upper Pittsgrove Twp	\$0.279	4.2%
3	Salem	Woodstown-Pilesgrove Reg	\$0.869	4.3%
		Legislative District Total	\$64.039	10.3%
4	Camden	Black Horse Pike Regional	\$6.947	11.3%
4	Camden	Camden County Vocational	\$5.784	13.7%
4	Camden	Clementon Boro	\$0.833	7.8%
4	Camden	Gloucester Twp	\$3.654	4.1%
4	Camden	Laurel Springs Boro	\$0.338	7.9%
4	Camden	Lindenwold Boro	\$4.073	12.1%
4	Gloucester	Franklin Twp	\$1.184	6.9%
4	Gloucester	Glassboro	\$1.357	4.1%
4	Gloucester	Gloucester Co Vocational	\$3.127	17.5%
4	Gloucester	Monroe Twp	\$14.039	18.6%
4	Gloucester	Newfield Boro	\$0.593	15.5%
4	Gloucester	Pitman Boro	\$0.869	4.1%
4	Gloucester	Delsea Regional H.S Dist.	\$1.322	5.0%
4	Gloucester	Washington Twp	\$5.169	4.0%
		Legislative District Total	\$49.290	8.7%
5	Camden	Audubon Boro	\$0.783	3.9%
5	Camden	Barrington Boro	\$1.278	9.5%
5	Camden	Bellmawr Boro	\$2.676	21.9%
5	Camden	Black Horse Pike Regional	\$6.947	11.3%
5	Camden	Brooklawn Boro	\$0.076	1.6%
5	Camden	Camden City	\$11.838	4.1%
5	Camden	Camden County Vocational	\$5.784	13.7%
5	Camden	Gloucester City	\$1.675	4.3%
5	Camden	Haddon Heights Boro	\$0.796	4.0%
5	Camden	Hi Nella	\$0.059	3.8%
5	Camden	Lawnside Boro	\$1.089	13.2%
5	Camden	Magnolia Boro	\$0.474	7.8%
5	Camden	Mount Ephraim Boro	\$0.668	7.4%
5	Camden	Runnemede Boro	\$2.036	18.0%
5	Camden	Somerdale Boro	\$1.357	22.4%
5	Camden	Sterling High School Dist	\$2.149	14.9%
5	Camden	Stratford Boro	\$1.807	17.7%
5	Camden	Woodlynne Boro	\$2.451	27.4%
5	Gloucester	Deptford Twp	\$4.218	7.5%
5	Gloucester	Gateway Regional	\$0.678	4.2%
5	Gloucester	Gloucester Co Vocational	\$3.127	17.5%
5	Gloucester	Westville Boro	\$0.185	3.9%

Background Paper: State School Aid Pursuant to the "School Funding Reform Act of 2008" (Cont'd)

Leg. Dist.	County	District	Add'l Aid Under SFRA (millions)	Add'l Aid as % of FY 2011 Budget
5	Gloucester	Woodbury City	\$3.198	14.4%
5	Gloucester	Woodbury Heights Boro	\$0.127	4.0%
		Legislative District Total	\$55.477	7.9%
6	Camden	Berlin Boro	\$1.019	10.9%
6	Camden	Berlin Twp	\$0.828	6.3%
6	Camden	Camden County Vocational	\$5.784	13.7%
6	Camden	Cherry Hill Twp	\$10.330	6.3%
6	Camden	Chesilhurst	\$0.015	0.5%
6	Camden	Collingswood Boro	\$1.186	4.0%
6	Camden	Eastern Camden County Reg	\$1.332	4.2%
6	Camden	Gibbsboro Boro	\$0.172	4.2%
6	Camden	Haddon Twp	\$1.641	5.8%
6	Camden	Haddonfield	\$1.284	4.1%
6	Camden	Oaklyn Boro	\$0.602	7.8%
6	Camden	Pine Hill Boro	\$1.286	4.1%
6	Camden	Voorhees Twp	\$1.886	3.9%
6	Camden	Waterford Twp	\$1.310	5.3%
6	Camden	Winslow Twp	\$3.697	4.1%
		Legislative District Total	\$32.373	5.8%
7	Burlington	Beverly City	\$0.258	4.2%
7	Burlington	Burlington City	\$1.167	4.0%
7	Burlington	Burlington Co Vocational	\$1.341	4.0%
7	Burlington	Burlington Twp	\$10.551	19.9%
7	Burlington	Cinnaminson Twp	\$1.546	4.0%
7	Burlington	Delanco Twp	\$0.210	2.6%
7	Burlington	Delran Twp	\$5.417	14.1%
7	Burlington	Edgewater Park Twp	\$1.948	12.8%
7	Burlington	Florence Twp	\$1.465	6.3%
7	Burlington	Maple Shade Twp	\$5.098	17.6%
7	Burlington	Mount Holly Twp	\$0.712	4.2%
7	Burlington	Palmyra Boro	\$0.757	5.5%
7	Burlington	Rancocas Valley Regional	\$1.594	4.5%
7	Burlington	Riverside Twp	\$2.056	10.8%
7	Burlington	Riverton	\$0.190	3.9%
7	Burlington	Westampton	\$0.479	4.0%
7	Burlington	Willingboro Twp	\$2.739	4.2%
7	Camden	Camden County Vocational	\$5.784	13.7%
7	Camden	Merchantville Boro	\$0.243	4.2%
7	Camden	Pennsauken Twp	\$14.638	17.5%
		Legislative District Total	\$58.191	10.1%
8	Burlington	Burlington Co Vocational	\$1.341	4.0%
8	Burlington	Eastampton Twp	\$0.352	4.0%
8	Burlington	Evesham Twp	\$2.868	4.2%

Background Paper: State School Aid Pursuant to the "School Funding Reform Act of 2008" (Cont'd)

Leg. Dist.	County	District	Add'l Aid Under SFRA (millions)	Add'l Aid as % of FY 2011 Budget
8	Burlington	Hainesport Twp	\$0.343	4.3%
8	Burlington	Lenape Regional	\$5.413	4.3%
8	Burlington	Lumberton Twp	\$0.888	4.2%
8	Burlington	Mansfield Twp	\$0.528	5.9%
8	Burlington	Medford Lakes Boro	\$0.657	10.2%
8	Burlington	Medford Twp	\$2.249	5.2%
8	Burlington	Moorestown Twp	\$2.465	4.2%
8	Burlington	Mount Laurel Twp	\$2.375	4.0%
8	Burlington	Pemberton Twp	\$3.954	4.1%
8	Burlington	Rancocas Valley Regional	\$1.594	4.5%
8	Burlington	Shamong Twp	\$0.505	4.2%
8	Burlington	Southampton Twp	\$0.469	4.0%
8	Burlington	Springfield Twp	\$0.179	4.1%
8	Burlington	Tabernacle Twp	\$0.523	4.2%
8	Burlington	Woodland Twp	\$0.098	4.1%
		Legislative District Total	\$26.801	4.3%
9	Atlantic	Atlantic Co Vocational	\$2.039	17.1%
9	Atlantic	Folsom Boro	\$0.417	5.8%
9	Atlantic	Hammonton Town	\$7.494	18.9%
9	Burlington	Bass River Twp	\$0.062	2.9%
9	Burlington	Burlington Co Vocational	\$1.341	4.0%
9	Burlington	Washington Twp	\$0.074	3.4%
9	Ocean	Barneget Twp	\$1.867	4.1%
9	Ocean	Beach Haven Boro	\$0.058	4.0%
9	Ocean	Berkeley Twp	\$1.137	3.9%
9	Ocean	Central Regional	\$1.164	3.8%
9	Ocean	Eagleswood Twp	\$0.093	4.2%
9	Ocean	Lacey Twp	\$2.446	4.1%
9	Ocean	Lakehurst Boro	\$0.443	5.5%
9	Ocean	Little Egg Harbor Twp	\$0.873	4.3%
9	Ocean	Long Beach Island	\$0.246	4.4%
9	Ocean	Manchester Twp	\$1.810	4.1%
9	Ocean	Ocean County Vocational	\$1.019	4.2%
9	Ocean	Ocean Gate Boro	\$0.110	4.2%
9	Ocean	Ocean Twp	\$0.684	4.1%
9	Ocean	Pinelands Regional	\$1.229	4.1%
9	Ocean	Southern Regional	\$2.146	4.2%
9	Ocean	Stafford Twp	\$1.330	4.1%
9	Ocean	Toms River Regional	\$7.206	3.7%
9	Ocean	Tuckerton Boro	\$0.189	4.8%
		Legislative District Total	\$35.478	5.1%
10	Monmouth	Manasquan Boro	\$0.784	3.4%
10	Monmouth	Monmouth Co Vocational	\$2.002	5.0%
10	Ocean	Bay Head Boro	\$0.047	1.5%

Background Paper: State School Aid Pursuant to the "School Funding Reform Act of 2008" (Cont'd)

Leg. Dist.	County	District	Add'l Aid Under SFRA (millions)	Add'l Aid as % of FY 2011 Budget
10	Ocean	Brick Twp	\$4.639	3.4%
10	Ocean	Island Heights Boro	\$0.079	4.2%
10	Ocean	Lavallette Boro	\$0.136	3.7%
10	Ocean	Ocean County Vocational	\$1.019	4.2%
10	Ocean	Point Pleasant Boro	\$1.422	4.0%
10	Ocean	Point Pleasant Beach	\$0.516	4.0%
10	Ocean	Seaside Heights Boro	\$0.146	4.1%
10	Ocean	Seaside Park Boro	\$0.064	5.1%
10	Ocean	Toms River Regional	\$7.206	3.7%
		Legislative District Total	\$18.058	3.8%
11	Monmouth	Allenhurst	\$0.011	5.1%
11	Monmouth	Asbury Park City	\$2.510	4.1%
11	Monmouth	Atlantic Highlands Boro	\$0.191	4.0%
11	Monmouth	Avon Boro	\$0.136	4.0%
11	Monmouth	Belmar Boro	\$0.422	4.0%
11	Monmouth	Bradley Beach Boro	\$0.273	4.2%
11	Monmouth	Brielle Boro	\$0.527	4.5%
11	Monmouth	Deal Boro	\$0.109	4.0%
11	Monmouth	Eatontown Boro	\$0.754	4.0%
11	Monmouth	Henry Hudson Regional	\$0.347	3.9%
11	Monmouth	Highlands Boro	\$0.153	4.1%
11	Monmouth	Interlaken	\$0.022	4.1%
11	Monmouth	Long Branch City	\$4.611	6.2%
11	Monmouth	Monmouth Beach Boro	\$0.186	4.1%
11	Monmouth	Monmouth Co Vocational	\$2.002	5.0%
11	Monmouth	Monmouth Regional	\$0.866	3.5%
11	Monmouth	Neptune City	\$1.089	14.5%
11	Monmouth	Neptune Twp	\$2.950	4.4%
11	Monmouth	Ocean Twp	\$2.655	4.2%
11	Monmouth	Rumson Boro	\$0.662	5.0%
11	Monmouth	Rumson-Fair Haven Reg	\$0.607	3.8%
11	Monmouth	Sea Girt Boro	\$0.144	3.3%
11	Monmouth	Shore Regional	\$0.594	4.1%
11	Monmouth	Lake Como	\$0.127	3.7%
11	Monmouth	Spring Lake Boro	\$0.274	4.0%
11	Monmouth	Spring Lake Heights Boro	\$0.293	4.0%
11	Monmouth	Wall Twp	\$2.396	4.0%
11	Monmouth	West Long Branch Boro	\$0.366	3.8%
		Legislative District Total	\$25.277	4.6%
12	Mercer	East Windsor Regional	\$7.211	9.9%
12	Mercer	Mercer County Vocational	\$0.437	3.2%
12	Monmouth	Colts Neck Twp	\$0.846	4.1%
12	Monmouth	Fair Haven Boro	\$0.502	4.2%
12	Monmouth	Freehold Boro	\$4.753	27.4%

Background Paper: State School Aid Pursuant to the "School Funding Reform Act of 2008" (Cont'd)

Leg. Dist.	County	District	Add'l Aid Under SFRA (millions)	Add'l Aid as % of FY 2011 Budget
12	Monmouth	Freehold Regional	\$13.633	8.2%
12	Monmouth	Freehold Twp	\$3.795	6.0%
12	Monmouth	Little Silver Boro	\$0.458	4.1%
12	Monmouth	Manalapan-Englishtown Reg	\$2.839	4.0%
12	Monmouth	Marlboro Twp	\$2.511	3.3%
12	Monmouth	Millstone Twp	\$1.354	4.4%
12	Monmouth	Monmouth Co Vocational	\$2.002	5.0%
12	Monmouth	Monmouth Regional	\$0.866	3.5%
12	Monmouth	Oceanport Boro	\$0.407	4.6%
12	Monmouth	Red Bank Boro	\$1.713	12.1%
12	Monmouth	Red Bank Regional	\$0.942	4.0%
12	Monmouth	Rumson-Fair Haven Reg	\$0.607	3.8%
12	Monmouth	Shrewsbury Boro	\$0.278	4.1%
12	Monmouth	Tinton Falls	\$1.046	4.1%
		Legislative District Total	\$46.201	6.4%
13	Middlesex	Middlesex Co Vocational	\$3.716	9.7%
13	Middlesex	Old Bridge Twp	\$6.474	5.0%
13	Monmouth	Hazlet Twp	\$4.687	10.2%
13	Monmouth	Holmdel Twp	\$2.526	5.0%
13	Monmouth	Keansburg Boro	\$1.117	3.3%
13	Monmouth	Keyport Boro	\$1.492	8.7%
13	Monmouth	Matawan-Aberdeen Regional	\$5.060	9.1%
13	Monmouth	Middletown Twp	\$5.800	4.2%
13	Monmouth	Monmouth Co Vocational	\$2.002	5.0%
13	Monmouth	Union Beach	\$1.624	10.1%
		Legislative District Total	\$34.497	6.1%
14	Mercer	Hamilton Twp	\$9.867	5.7%
14	Mercer	Mercer County Vocational	\$0.437	3.2%
14	Mercer	W Windsor-Plainsboro Reg	\$8.294	5.6%
14	Middlesex	Cranbury Twp	\$0.702	4.2%
14	Middlesex	Jamesburg Boro	\$2.631	23.8%
14	Middlesex	Middlesex Co Vocational	\$3.716	9.7%
14	Middlesex	Monroe Twp	\$4.524	5.1%
14	Middlesex	South Brunswick Twp	\$13.152	11.0%
		Legislative District Total	\$43.321	7.1%
15	Mercer	Ewing Twp	\$5.595	10.0%
15	Mercer	Hopewell Valley Regional	\$2.807	4.1%
15	Mercer	Lawrence Twp	\$2.687	4.1%
15	Mercer	Mercer County Vocational	\$0.437	3.2%
15	Mercer	Princeton Regional	\$2.952	4.1%
15	Mercer	Trenton City	\$10.116	4.2%
		Legislative District Total	\$24.592	4.8%

Background Paper: State School Aid Pursuant to the "School Funding Reform Act of 2008" (Cont'd)

Leg. Dist.	County	District	Add'l Aid Under SFRA (millions)	Add'l Aid as % of FY 2011 Budget
16	Morris	Mendham Boro	\$0.400	4.5%
16	Morris	Morris County Vocational	\$0.684	4.3%
16	Morris	West Morris Regional	\$1.832	4.1%
16	Somerset	Bedminster Twp	\$0.597	4.1%
16	Somerset	Bernards Twp	\$4.029	5.1%
16	Somerset	Bound Brook Boro	\$4.189	20.3%
16	Somerset	Branchburg Twp	\$1.995	4.9%
16	Somerset	Bridgewater-Raritan Reg	\$7.873	6.1%
16	Somerset	Hillsborough Twp	\$10.918	10.8%
16	Somerset	Manville Boro	\$3.092	16.5%
16	Somerset	Montgomery Twp	\$5.175	7.4%
16	Somerset	Somerset Co Vocational	\$0.661	4.9%
16	Somerset	Somerset Hills Regional	\$1.446	4.3%
16	Somerset	Somerville Boro	\$3.396	9.1%
16	Somerset	South Bound Brook	\$1.469	17.5%
		Legislative District Total	\$47.755	7.5%
17	Middlesex	Highland Park Boro	\$0.977	4.0%
17	Middlesex	Middlesex Co Vocational	\$3.716	9.7%
17	Middlesex	Milltown Boro	\$0.831	6.1%
17	Middlesex	New Brunswick City	\$21.572	15.5%
17	Middlesex	North Brunswick Twp	\$8.728	11.2%
17	Middlesex	Piscataway Twp	\$11.254	11.9%
17	Somerset	Franklin Twp	\$9.968	7.9%
17	Somerset	Somerset Co Vocational	\$0.661	4.9%
		Legislative District Total	\$57.707	10.9%
18	Middlesex	East Brunswick Twp	\$9.600	7.5%
18	Middlesex	Edison Twp	\$13.383	7.0%
18	Middlesex	Metuchen Boro	\$1.310	4.3%
18	Middlesex	Middlesex Co Vocational	\$3.716	9.7%
18	Middlesex	South Plainfield Boro	\$6.641	13.6%
18	Middlesex	South River Boro	\$6.525	25.8%
18	Middlesex	Spotswood	\$2.913	12.3%
		Legislative District Total	\$44.087	9.1%
19	Middlesex	Carteret Boro	\$13.622	28.1%
19	Middlesex	Middlesex Co Vocational	\$3.716	9.7%
19	Middlesex	Perth Amboy City	\$42.612	27.4%
19	Middlesex	Sayreville Boro	\$12.430	17.1%
19	Middlesex	South Amboy City	\$0.923	6.6%
19	Middlesex	Woodbridge Twp	\$18.662	10.7%
		Legislative District Total	\$91.965	18.3%
20	Union	Elizabeth City	\$91.134	27.8%
20	Union	Kenilworth Boro	\$1.712	8.6%

Background Paper: State School Aid Pursuant to the "School Funding Reform Act of 2008" (Cont'd)

Leg. Dist.	County	District	Add'l Aid Under SFRA (millions)	Add'l Aid as % of FY 2011 Budget
20	Union	Roselle Boro	\$9.630	19.4%
20	Union	Union County Vocational	\$3.360	17.2%
20	Union	Union Twp	\$13.845	11.1%
		Legislative District Total	\$119.681	22.1%
21	Essex	Essex Co Voc-Tech	\$7.783	21.0%
21	Essex	Millburn Twp	\$2.863	3.8%
21	Morris	Sch Dist Of The Chathams	\$2.579	4.8%
21	Morris	Harding Township	\$0.350	3.9%
21	Morris	Madison Boro	\$1.472	3.6%
21	Morris	Morris County Vocational	\$0.684	4.3%
21	Morris	Long Hill Twp	\$0.564	4.0%
21	Somerset	Somerset Co Vocational	\$0.661	4.9%
21	Somerset	Warren Twp	\$1.547	4.1%
21	Somerset	Watchung Boro	\$0.518	4.9%
21	Somerset	Watchung Hills Regional	\$1.576	4.5%
21	Union	Berkeley Heights Twp	\$1.823	4.4%
21	Union	Cranford Twp	\$3.547	7.0%
21	Union	Garwood Boro	\$0.298	3.9%
21	Union	Mountainside Boro	\$0.778	5.3%
21	Union	New Providence Boro	\$1.288	4.0%
21	Union	Roselle Park Boro	\$4.540	16.4%
21	Union	Springfield Twp	\$1.383	4.2%
21	Union	Summit City	\$2.201	3.6%
21	Union	Union County Vocational	\$3.360	17.2%
21	Union	Westfield Town	\$3.434	4.1%
		Legislative District Total	\$43.248	6.0%
22	Middlesex	Dunellen Boro	\$2.915	21.7%
22	Middlesex	Middlesex Boro	\$4.112	14.7%
22	Middlesex	Middlesex Co Vocational	\$3.716	9.7%
22	Somerset	Green Brook Twp	\$1.123	5.4%
22	Somerset	North Plainfield Boro	\$13.067	25.3%
22	Somerset	Somerset Co Vocational	\$0.661	4.9%
22	Union	Clark Twp	\$2.054	6.7%
22	Union	Linden City	\$11.511	11.3%
22	Union	Plainfield City	\$22.343	18.7%
22	Union	Rahway City	\$11.402	20.4%
22	Union	Scotch Plains-Fanwood Reg	\$4.023	5.3%
22	Union	Union County Vocational	\$3.360	17.2%
22	Union	Winfield Twp	\$0.107	3.5%
		Legislative District Total	\$80.392	14.0%
23	Hunterdon	Alexandria Twp	\$0.355	4.0%
23	Hunterdon	Bethlehem Twp	\$0.363	4.1%
23	Hunterdon	Bloomsbury Boro	\$0.273	10.7%

Background Paper: State School Aid Pursuant to the "School Funding Reform Act of 2008" (Cont'd)

Leg. Dist.	County	District	Add'l Aid Under SFRA (millions)	Add'l Aid as % of FY 2011 Budget
23	Hunterdon	Clinton Town	\$0.365	5.1%
23	Hunterdon	Clinton Twp	\$1.144	4.8%
23	Hunterdon	Delaware Twp	\$0.312	4.0%
23	Hunterdon	Delaware Valley Regional	\$1.182	7.3%
23	Hunterdon	East Amwell Twp	\$0.288	4.0%
23	Hunterdon	Flemington-Raritan Reg	\$3.551	7.3%
23	Hunterdon	Franklin Twp	\$0.222	4.4%
23	Hunterdon	Frenchtown Boro	\$0.097	4.1%
23	Hunterdon	Hampton Boro	\$0.105	4.1%
23	Hunterdon	High Bridge Boro	\$0.259	4.1%
23	Hunterdon	Holland Twp	\$0.799	8.3%
23	Hunterdon	Hunterdon Central Reg	\$3.775	6.5%
23	Hunterdon	Hunterdon Co Vocational	\$0.187	4.1%
23	Hunterdon	Kingwood Twp	\$0.251	3.9%
23	Hunterdon	Lambertville City	\$0.126	4.1%
23	Hunterdon	Lebanon Boro	\$0.092	3.7%
23	Hunterdon	Lebanon Twp	\$0.546	4.2%
23	Hunterdon	Milford Boro	\$0.082	4.0%
23	Hunterdon	N Hunt/Voorhees Regional	\$2.949	5.5%
23	Hunterdon	Readington Twp	\$1.267	4.3%
23	Hunterdon	South Hunterdon Regional	\$0.345	4.1%
23	Hunterdon	Stockton Boro	\$0.010	1.5%
23	Hunterdon	Union Twp	\$0.370	4.1%
23	Hunterdon	West Amwell Twp	\$0.159	3.7%
23	Warren	Allamuchy Twp	\$0.305	4.0%
23	Warren	Alpha Boro	\$0.698	14.9%
23	Warren	Belvidere Town	\$0.485	4.1%
23	Warren	Blairstown Twp	\$0.633	7.6%
23	Warren	Franklin Twp	\$0.190	4.2%
23	Warren	Frelinghuysen Twp	\$0.104	4.3%
23	Warren	Great Meadows Regional	\$0.759	4.2%
23	Warren	Greenwich Twp	\$1.339	10.6%
23	Warren	Hackettstown	\$2.240	8.2%
23	Warren	Harmony Twp	\$0.276	4.5%
23	Warren	Hope Twp	\$0.175	4.1%
23	Warren	Knowlton Twp	\$0.169	4.1%
23	Warren	Lopatcong Twp	\$1.971	13.4%
23	Warren	Mansfield Twp	\$0.481	6.0%
23	Warren	North Warren Regional	\$0.664	4.2%
23	Warren	Oxford Twp	\$0.234	3.9%
23	Warren	Phillipsburg Town	\$2.058	4.0%
23	Warren	Pohatcong Twp	\$0.445	6.7%
23	Warren	Warren County Vocational	\$0.870	9.3%
23	Warren	Warren Hills Regional	\$1.319	4.2%
23	Warren	Washington Boro	\$1.186	17.3%
23	Warren	Washington Twp	\$0.319	4.0%

Background Paper: State School Aid Pursuant to the "School Funding Reform Act of 2008" (Cont'd)

Leg. Dist.	County	District	Add'l Aid Under SFRA (millions)	Add'l Aid as % of FY 2011 Budget
23	Warren	White Twp	\$0.345	4.2%
		Legislative District Total	\$36.740	5.8%
24	Hunterdon	Califon Boro	\$0.149	6.8%
24	Hunterdon	Hunterdon Co Vocational	\$0.187	4.1%
24	Hunterdon	N Hunt/Voorhees Regional	\$2.949	5.5%
24	Hunterdon	Tewksbury Twp	\$0.578	4.9%
24	Morris	Chester Twp	\$0.845	4.2%
24	Morris	Morris County Vocational	\$0.684	4.3%
24	Morris	Mount Olive Twp	\$6.415	8.8%
24	Morris	Netcong Boro	\$0.649	17.2%
24	Morris	Washington Twp	\$2.602	6.7%
24	Morris	West Morris Regional	\$1.832	4.1%
24	Sussex	Andover Reg	\$0.565	4.2%
24	Sussex	Byram Twp	\$0.540	4.1%
24	Sussex	Frankford Twp	\$0.387	3.8%
24	Sussex	Franklin Boro	\$0.310	3.9%
24	Sussex	Fredon Twp	\$0.332	7.2%
24	Sussex	Green Twp	\$0.382	3.8%
24	Sussex	Hamburg Boro	\$0.187	3.5%
24	Sussex	Hampton Twp	\$0.248	4.0%
24	Sussex	Hardyston Twp	\$0.419	4.0%
24	Sussex	High Point Regional	\$0.908	4.1%
24	Sussex	Hopatcong	\$1.014	3.0%
24	Sussex	Kittatinny Regional	\$0.802	4.1%
24	Sussex	Lafayette Twp	\$0.152	3.6%
24	Sussex	Lenape Valley Regional	\$0.537	4.1%
24	Sussex	Montague Twp	\$0.333	4.2%
24	Sussex	Newton Town	\$1.444	6.4%
24	Sussex	Ogdensburg Boro	\$0.073	1.7%
24	Sussex	Sandyston-Walpack Twp	\$0.112	4.2%
24	Sussex	Sparta Twp	\$2.175	4.1%
24	Sussex	Stanhope Boro	\$0.210	4.3%
24	Sussex	Stillwater Twp	\$0.204	3.4%
24	Sussex	Sussex-Wantage Regional	\$0.884	4.0%
24	Sussex	Sussex County Vocational	\$0.489	4.1%
24	Sussex	Vernon Twp	\$2.551	3.8%
24	Sussex	Wallkill Valley Regional	\$0.549	4.0%
		Legislative District Total	\$32.696	5.0%
25	Morris	Boonton Town	\$1.233	5.7%
25	Morris	Boonton Twp	\$0.579	5.0%
25	Morris	Denville Twp	\$1.055	4.1%
25	Morris	Dover Town	\$11.822	31.1%
25	Morris	Jefferson Twp	\$2.717	5.3%
25	Morris	Mendham Twp	\$0.774	5.2%

Background Paper: State School Aid Pursuant to the "School Funding Reform Act of 2008" (Cont'd)

Leg. Dist.	County	District	Add'l Aid Under SFRA (millions)	Add'l Aid as % of FY 2011 Budget
25	Morris	Mine Hill Twp	\$0.921	11.7%
25	Morris	Morris County Vocational	\$0.684	4.3%
25	Morris	Morris Hills Regional	\$3.651	6.7%
25	Morris	Morris School District	\$3.930	4.2%
25	Morris	Mount Arlington Boro	\$0.403	4.2%
25	Morris	Mountain Lakes Boro	\$0.613	1.9%
25	Morris	Randolph Twp	\$4.045	5.5%
25	Morris	Rockaway Boro	\$0.565	7.7%
25	Morris	Rockaway Twp	\$2.624	6.0%
25	Morris	Roxbury Twp	\$5.226	8.0%
25	Morris	West Morris Regional	\$1.832	4.1%
25	Morris	Wharton Boro	\$1.970	18.5%
		Legislative District Total	\$44.642	7.2%
26	Morris	Butler Boro	\$0.774	3.9%
26	Morris	Sch Dist Of The Chathams	\$2.579	4.8%
26	Morris	East Hanover Twp	\$0.709	4.0%
26	Morris	Florham Park Boro	\$0.674	4.4%
26	Morris	Hanover Park Regional	\$1.413	4.9%
26	Morris	Hanover Twp	\$0.901	4.0%
26	Morris	Kinnelon Boro	\$1.590	5.1%
26	Morris	Lincoln Park Boro	\$0.762	4.2%
26	Morris	Montville Twp	\$3.227	5.0%
26	Morris	Morris County Vocational	\$0.684	4.3%
26	Morris	Morris Plains Boro	\$0.576	4.0%
26	Morris	Parsippany-Troy Hills Twp	\$6.559	5.4%
26	Morris	Pequannock Twp	\$1.427	4.1%
26	Morris	Riverdale Boro	\$0.257	3.9%
26	Passaic	Bloomingtondale Boro	\$0.656	4.0%
26	Passaic	Passaic County Vocational	\$11.657	17.8%
26	Passaic	Pompton Lakes Boro	\$2.043	7.3%
26	Passaic	West Milford Twp	\$2.626	4.0%
		Legislative District Total	\$39.113	6.1%
27	Essex	Caldwell-West Caldwell	\$1.511	3.9%
27	Essex	Essex Co Voc-Tech	\$7.783	21.0%
27	Essex	Essex Fells Boro	\$0.117	3.0%
27	Essex	Fairfield Twp	\$0.524	4.7%
27	Essex	Livingston Twp	\$3.750	4.2%
27	Essex	Newark City	\$46.904	5.9%
27	Essex	North Caldwell Boro	\$0.195	1.8%
27	Essex	City Of Orange Twp	\$7.552	10.1%
27	Essex	Roseland Boro	\$0.301	4.3%
27	Essex	South Orange-Maplewood	\$5.599	5.4%
27	Essex	West Essex Regional	\$1.358	4.3%
27	Essex	West Orange Town	\$6.840	5.6%

Background Paper: State School Aid Pursuant to the "School Funding Reform Act of 2008" (Cont'd)

Leg. Dist.	County	District	Add'l Aid Under SFRA (millions)	Add'l Aid as % of FY 2011 Budget
Legislative District Total			\$82.432	6.2%
28	Essex	Belleville Town	\$13.530	24.1%
28	Essex	Bloomfield Twp	\$12.504	15.8%
28	Essex	Essex Co Voc-Tech	\$7.783	21.0%
28	Essex	Irvington Township	\$6.108	4.7%
28	Essex	Newark City	\$46.904	5.9%
Legislative District Total			\$86.828	7.9%
29	Essex	Essex Co Voc-Tech	\$7.783	21.0%
29	Essex	Newark City	\$46.904	5.9%
29	Union	Hillside Twp	\$8.761	18.6%
29	Union	Union County Vocational	\$3.360	17.2%
Legislative District Total			\$66.807	7.4%
30	Burlington	Bordentown Regional	\$4.020	12.2%
30	Burlington	Burlington Co Vocational	\$1.341	4.0%
30	Burlington	Chesterfield Twp	\$0.421	6.3%
30	Burlington	New Hanover Twp	\$0.210	4.8%
30	Burlington	North Hanover Twp	\$0.888	4.0%
30	Burlington	Northern Burlington Reg	\$1.399	4.6%
30	Mercer	Mercer County Vocational	\$0.437	3.2%
30	Mercer	Robbinsville Twp	\$2.635	8.0%
30	Monmouth	Farmingdale Boro	\$0.095	4.1%
30	Monmouth	Howell Twp	\$4.649	4.8%
30	Monmouth	Monmouth Co Vocational	\$2.002	5.0%
30	Monmouth	Roosevelt Boro	\$0.036	1.5%
30	Monmouth	Upper Freehold Regional	\$1.285	4.0%
30	Ocean	Jackson Twp	\$4.589	3.7%
30	Ocean	Lakewood Twp	\$11.115	11.3%
30	Ocean	Ocean County Vocational	\$1.019	4.2%
30	Ocean	Plumsted Twp	\$0.949	4.3%
Legislative District Total			\$37.088	6.0%
31	Hudson	Bayonne City	\$28.068	25.8%
31	Hudson	Hudson County Vocational	\$9.571	21.9%
31	Hudson	Jersey City	\$21.487	4.1%
Legislative District Total			\$59.126	8.8%
32	Bergen	Bergen County Vocational	\$2.357	3.9%
32	Bergen	Fairview Boro	\$3.881	20.9%
32	Hudson	East Newark Boro	\$1.277	29.4%
32	Hudson	Harrison Town	\$6.090	20.1%
32	Hudson	Hudson County Vocational	\$9.571	21.9%
32	Hudson	Jersey City	\$21.487	4.1%
32	Hudson	Kearny Town	\$16.736	21.9%

Background Paper: State School Aid Pursuant to the "School Funding Reform Act of 2008" (Cont'd)

Leg. Dist.	County	District	Add'l Aid Under SFRA (millions)	Add'l Aid as % of FY 2011 Budget
32	Hudson	North Bergen Twp	\$26.309	26.7%
32	Hudson	Secaucus Town	\$1.518	4.7%
		Legislative District Total	\$89.226	10.0%
33	Hudson	Guttenberg Town	\$2.674	19.1%
33	Hudson	Hoboken City	\$1.698	3.6%
33	Hudson	Hudson County Vocational	\$9.571	21.9%
33	Hudson	Jersey City	\$21.487	4.1%
33	Hudson	Union City	\$32.816	18.8%
33	Hudson	Weehawken Twp	\$0.810	4.1%
33	Hudson	West New York Town	\$14.740	15.9%
		Legislative District Total	\$83.796	9.2%
34	Essex	East Orange	\$8.178	4.2%
34	Essex	Essex Co Voc-Tech	\$7.783	21.0%
34	Essex	Glen Ridge Boro	\$1.202	4.6%
34	Essex	Montclair Town	\$4.389	4.1%
34	Passaic	Clifton City	\$17.961	13.1%
34	Passaic	Passaic Valley Regional	\$0.906	4.2%
34	Passaic	Passaic County Vocational	\$11.657	17.8%
34	Passaic	Woodland Park	\$1.011	7.2%
		Legislative District Total	\$53.087	8.8%
35	Bergen	Bergen County Vocational	\$2.357	3.9%
35	Bergen	Glen Rock Boro	\$1.644	4.1%
35	Passaic	Haledon Boro	\$3.427	25.6%
35	Passaic	Hawthorne Boro	\$2.519	7.6%
35	Passaic	North Haledon Boro	\$0.382	4.5%
35	Passaic	Passaic Co Manchester Reg	\$2.059	13.1%
35	Passaic	Passaic Valley Regional	\$0.906	4.2%
35	Passaic	Passaic County Vocational	\$11.657	17.8%
35	Passaic	Paterson City	\$38.502	9.1%
35	Passaic	Prospect Park Boro	\$3.788	36.2%
35	Passaic	Totowa Boro	\$0.562	4.1%
		Legislative District Total	\$67.802	9.6%
36	Bergen	Bergen County Vocational	\$2.357	3.9%
36	Bergen	Carlstadt Boro	\$0.387	4.4%
36	Bergen	Carlstadt-East Rutherford	\$0.415	3.4%
36	Bergen	East Rutherford Boro	\$0.524	4.1%
36	Bergen	Garfield City	\$8.988	12.8%
36	Bergen	Lyndhurst Twp	\$2.340	7.2%
36	Bergen	Moonachie Boro	\$0.308	4.1%
36	Bergen	North Arlington Boro	\$1.632	7.0%
36	Bergen	Rutherford Boro	\$1.479	4.1%
36	Bergen	Wallington Boro	\$2.037	13.1%

Background Paper: State School Aid Pursuant to the "School Funding Reform Act of 2008" (Cont'd)

Leg. Dist.	County	District	Add'l Aid Under SFRA (millions)	Add'l Aid as % of FY 2011 Budget
36	Bergen	Wood-Ridge Boro	\$1.092	6.9%
36	Essex	Essex Co Voc-Tech	\$7.783	21.0%
36	Essex	Nutley Town	\$3.754	7.1%
36	Passaic	Passaic City	\$55.193	27.5%
36	Passaic	Passaic County Vocational	\$11.657	17.8%
		Legislative District Total	\$99.944	15.3%
37	Bergen	Bergen County Vocational	\$2.357	3.9%
37	Bergen	Bergenfield Boro	\$4.697	8.4%
37	Bergen	Bogota Boro	\$3.268	18.2%
37	Bergen	Englewood City	\$4.417	7.5%
37	Bergen	Englewood Cliffs Boro	\$0.409	4.0%
37	Bergen	Hackensack City	\$7.943	9.4%
37	Bergen	Leonia Boro	\$1.922	7.5%
37	Bergen	Maywood Boro	\$1.345	7.9%
37	Bergen	Palisades Park	\$1.851	8.7%
37	Bergen	Ridgefield Park Twp	\$3.507	11.6%
37	Bergen	Rochelle Park Twp	\$0.405	4.2%
37	Bergen	Teaneck Twp	\$3.600	4.3%
37	Bergen	Tenafly Boro	\$1.788	3.2%
		Legislative District Total	\$37.507	7.0%
38	Bergen	Bergen County Vocational	\$2.357	3.9%
38	Bergen	Cliffside Park Boro	\$1.479	4.0%
38	Bergen	Edgewater Boro	\$0.659	4.8%
38	Bergen	Elmwood Park	\$2.565	8.7%
38	Bergen	Fair Lawn Boro	\$4.252	5.4%
38	Bergen	Fort Lee Boro	\$2.260	4.4%
38	Bergen	Hasbrouck Heights Boro	\$1.268	5.3%
38	Bergen	Little Ferry Boro	\$1.492	8.6%
38	Bergen	Lodi Borough	\$8.543	16.6%
38	Bergen	Paramus Boro	\$2.929	4.1%
38	Bergen	Ridgefield Boro	\$2.749	8.5%
38	Bergen	Saddle Brook Twp	\$1.373	5.1%
38	Bergen	South Hackensack Twp	\$0.267	3.9%
38	Bergen	Teterboro	\$0.001	0.6%
		Legislative District Total	\$32.195	6.4%
39	Bergen	Allendale Boro	\$0.349	2.5%
39	Bergen	Alpine Boro	\$0.194	3.4%
39	Bergen	Bergen County Vocational	\$2.357	3.9%
39	Bergen	Closter Boro	\$0.658	4.0%
39	Bergen	Cresskill Boro	\$0.918	3.9%
39	Bergen	Demarest Boro	\$0.387	3.1%
39	Bergen	Dumont Boro	\$4.557	11.6%
39	Bergen	Emerson Boro	\$0.836	4.9%

Background Paper: State School Aid Pursuant to the "School Funding Reform Act of 2008" (Cont'd)

Leg. Dist.	County	District	Add'l Aid Under SFRA (millions)	Add'l Aid as % of FY 2011 Budget
39	Bergen	Harrington Park Boro	\$0.509	5.1%
39	Bergen	Haworth Boro	\$0.298	4.0%
39	Bergen	Hillsdale Boro	\$1.100	6.0%
39	Bergen	Ho Ho Kus Boro	\$0.556	4.6%
39	Bergen	Montvale Boro	\$0.715	5.1%
39	Bergen	New Milford Boro	\$2.174	7.6%
39	Bergen	Northern Highlands Reg	\$0.756	3.2%
39	Bergen	Northern Valley Regional	\$1.644	3.4%
39	Bergen	Northvale Boro	\$0.376	4.5%
39	Bergen	Norwood Boro	\$0.349	3.9%
39	Bergen	Old Tappan Boro	\$0.472	3.3%
39	Bergen	Oradell Boro	\$0.428	4.4%
39	Bergen	Park Ridge Boro	\$0.728	3.0%
39	Bergen	Pascack Valley Regional	\$1.444	3.4%
39	Bergen	Ramsey Boro	\$1.898	3.8%
39	Bergen	River Dell Regional	\$0.966	3.7%
39	Bergen	River Edge Boro	\$0.888	6.2%
39	Bergen	River Vale Twp	\$0.670	3.5%
39	Bergen	Rockleigh	\$0.016	2.3%
39	Bergen	Saddle River Boro	\$0.308	3.8%
39	Bergen	Upper Saddle River Boro	\$0.814	4.0%
39	Bergen	Waldwick Boro	\$1.312	5.1%
39	Bergen	Westwood Regional	\$1.818	3.9%
39	Bergen	Woodcliff Lake Boro	\$0.490	3.7%
		Legislative District Total	\$30.981	4.5%
40	Bergen	Bergen County Vocational	\$2.357	3.9%
40	Bergen	Franklin Lakes Boro	\$1.005	4.0%
40	Bergen	Mahwah Twp	\$2.214	4.1%
40	Bergen	Midland Park Boro	\$0.980	5.3%
40	Bergen	Oakland Boro	\$1.022	4.1%
40	Bergen	Ramapo-Indian Hill Reg	\$2.022	4.4%
40	Bergen	Ridgewood Village	\$2.763	3.3%
40	Bergen	Wyckoff Twp	\$1.429	4.4%
40	Essex	Cedar Grove Twp	\$1.095	4.6%
40	Essex	Essex Co Voc-Tech	\$7.783	21.0%
40	Essex	Verona Boro	\$1.169	4.2%
40	Passaic	Lakeland Regional	\$1.434	6.8%
40	Passaic	Little Falls Twp	\$0.494	3.8%
40	Passaic	Passaic Valley Regional	\$0.906	4.2%
40	Passaic	Ringwood Boro	\$0.805	4.1%
40	Passaic	Wanaque Boro	\$1.015	7.1%
40	Passaic	Wayne Twp	\$5.565	4.3%
		Legislative District Total	\$34.059	5.2%

OFFICE OF LEGISLATIVE SERVICES

The Office of Legislative Services provides nonpartisan assistance to the State Legislature in the areas of legal, fiscal, research, bill drafting, committee staffing and administrative services. It operates under the jurisdiction of the Legislative Services Commission, a bipartisan body consisting of eight members of each House. The Executive Director supervises and directs the Office of Legislative Services.

The Legislative Budget and Finance Officer is the chief fiscal officer for the Legislature. The Legislative Budget and Finance Officer collects and presents fiscal information for the Legislature; serves as Secretary to the Joint Budget Oversight Committee; attends upon the Appropriations Committees during review of the Governor's Budget recommendations; reports on such matters as the committees or Legislature may direct; administers the fiscal note process and has statutory responsibilities for the review of appropriations transfers and other State fiscal transactions.

The Office of Legislative Services Central Staff provides a variety of legal, fiscal, research and administrative services to individual legislators, legislative officers, legislative committees and commissions, and partisan staff. The central staff is organized under the Central Staff Management Unit into ten subject area sections. Each section, under a section chief, includes legal, fiscal, and research staff for the standing reference committees of the Legislature and, upon request, to special commissions created by the Legislature. The central staff assists the Legislative Budget and Finance Officer in providing services to the Appropriations Committees during the budget review process.

Individuals wishing information and committee schedules on the FY 2012 budget are encouraged to contact:

**Legislative Budget and Finance Office
State House Annex
Room 140 PO Box 068
Trenton, NJ 08625
(609) 292-8030 • Fax (609) 777-2442**